



Shaping places
that make a
positive impact
on people's lives

Lasting change for communities and the built environment

Joint managing directors' welcome	01
Making a lasting impact	02
Key highlights	
• Fair right to education	03
• Fostering inclusive, thriving communities	04
• Supporting improved health and wellbeing	05

190
YRS
Experience

9
UK
Offices

270
Members
of Staff

We believe everyone
deserves access
to well-designed,
healthy places where
communities can thrive.

Through our work,
we create environments
that empower people
and build the social
connections that
matter most.

For us, social value is not an add-on, it is embedded in everything we do as an architecture and building consultancy practice. Guided by the Social Value Act, we engage with communities to understand their needs and priorities, ensuring our projects deliver lasting benefits.

Our approach centres on three clear commitments: championing fair access to education for all, fostering inclusive and accessible communities and supporting improved health and wellbeing. By formalising these objectives, we focus our efforts where they create the most meaningful change.

We create opportunities through career development, inspire young people about our industry and open alternative pathways into the profession.

Quality places directly enhance people's health, prosperity and sense of belonging. By sharing knowledge and working collaboratively, we help deliver low-carbon, healthy places that make a real difference to people's lives.

We also champion equality, diversity and inclusivity, and support our colleagues' physical, emotional and financial wellbeing.

This report highlights our progress over the past year and our ongoing journey towards a more responsible, sustainable future.



Anthony Langan
Managing Director,
Architecture



Allan Hunt
Managing Director,
Building Consultancy

Our work extends beyond buildings

We help strengthen communities, support local economies and improve wellbeing. Whether we deliver sustainable, inclusive environments or champion community engagement and economic growth, we take pride in making a positive difference.

Our commitment to social value is guided by three objectives:



Fair right to education



Inclusive, accessible communities



Improved health and wellbeing

[Discover more about our progress towards social value](#)



Sustainability and social value

Intrinsically linked, social value and sustainability are integral to how we work, shaping places that perform well over time and support the future health, wellbeing and sense of belonging of the people who use them.

[Learn more about our approach to sustainability](#)



Measuring our social value impact

Understanding the impact of our work and the meaningful change it has on communities matters enormously to us.

We use a nationally recognised framework to track our social value activities, helping us measure the genuine outcomes we achieve.

This approach lets us quantify our financial contribution we make to local communities, bringing transparency and accountability to the value we create beyond our work.

£503k
Total social value impact



64

work experience weeks with us on placement

51

work experience students supported



colleagues supported on Level 2+ qualifications

23

events with schools and universities



Apprentices supported

120

hours dedicated to mentoring university students



RIBA AHR scholarship



Visiting professorship

5

Podcast episodes published

£25,653

fundraised for charity

17

fundraising events undertaken

19

charities supported

200+

volunteering hours contributed

5

Decarbonisation roundtables

28

Sustainability champions across our offices



Wellbeing champions across our offices

33,717

miles driven using zero emission vehicles



Creating opportunities for everyone

We believe everyone deserves the chance to explore a fulfilling career, regardless of their background or circumstances. By working closely with educational institutions and charities, we deliver talks, mentoring, career guidance, work experience placements and scholarships that empower individuals to succeed.

Through these partnerships, we support students from all backgrounds, giving them valuable insight into our professions. We also champion the open exchange of knowledge across our industry, sharing expertise from our projects.

Work experience

Every year we welcome students from schools, colleges and universities into placements across all our offices. By reaching a broad spectrum of young people, we're helping to break down barriers and support social mobility in our industry.

We offer a range of programmes giving students hands on experience across architecture and building consultancy, as well as the many other professions that keep a practice running. From design and surveying to marketing and finance, students gain practical skills and a clearer understanding of the career pathways available to them.

“I now have a much clearer understanding of how architectural projects come together - from initial concepts to final execution - and it has strengthened my interest in pursuing a career in this field.”

Harshith Gandhi
Altrincham Grammar School for Boys, Year 10

51

students given practical experience

64

combined work placement weeks



Regional highlights

10 Work experience students

Learning through real brief examples in Glasgow. Students worked with a RIBA brief to explore the design process from start to finish, concluding with a presentation of their new skills and work to the team.



Multi-service work experience

Through our work experience programme, a student spent a week with our architectural and building consultancy teams.

Starting in Leeds, she conducted site analysis and explored 3D technical design with our architects.

She then learned how refurbishing buildings enhances accessibility and safety with our building surveyors. Ending the week in Huddersfield, she explored the bidding process with our marketing team.



Experience of a live project site

Shrewsbury and Telford Hospital NHS Trust site. Inspired by what they saw on site, students at our Shrewsbury office worked to a real brief and designed their own cancer centre for an adjacent plot.



8 students visited our Bristol team

A rewarding learning experience.

Students gained hands-on experience, developing a deeper understanding of the design process, exploring 3D modelling and model making.



“It is clear that work experience this year has been the diverse, rich and rewarding learning experience we envisage.”

James Pretty
Assistant Head, Backwell School

Our Communities

Inspiring future generations

We partner with charities, education providers and clients to inspire and educate the next generation about careers in architecture and building consultancy.

Through careers fairs, workshops, employability sessions and presentations, we showcase the diverse opportunities within our industry and help students understand the skills and pathways needed to succeed.

This allows young people from all backgrounds to explore potential career paths, develop key skills and connect with industry professionals. By working alongside organisations that support young people, we ensure our social value activities have the greatest impact, opening doors and sparking ambitions that might otherwise go unrealised.

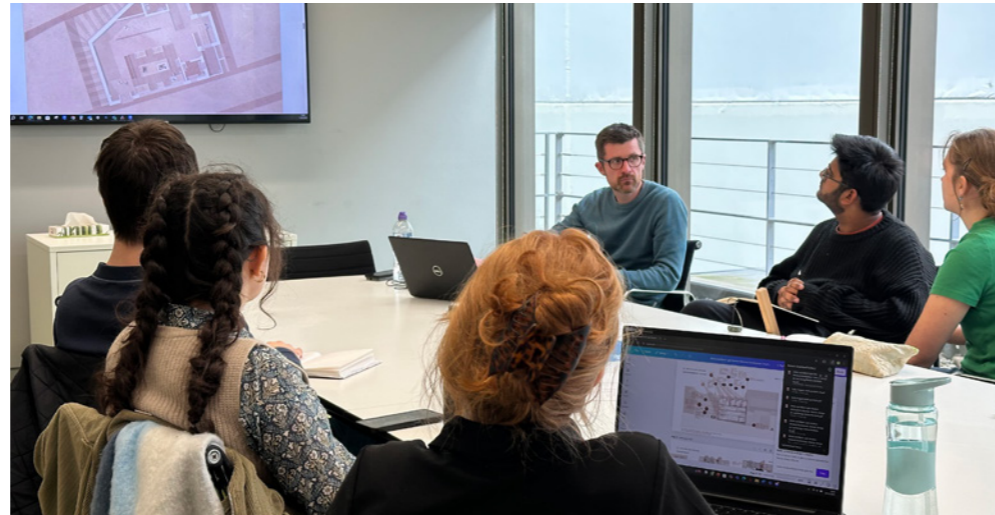
In 2025:

39

schools worked with
across a diversity of communities

17

school and college events attended
reaching a variety of students and young people



Our Communities

Mentoring the next generation

We are committed to nurturing future talent through working with universities on programmes such as the RIBA Future Architects Student Mentoring Scheme, mentoring students from across the UK providing them with invaluable industry insight.

Over 2025:

120

RIBA
mentoring hours

39

students were given
invaluable professional insight

13

universities worked with us to provide
hands on, practical learning experience

We develop strong partnerships with universities, enriching their programmes with practical perspectives and students gain an understanding of real-world projects, whilst making professional connections to support their careers.

Throughout the year, our Bristol and Cardiff teams worked with students from the University of the West of England, Swansea School of Architecture, Bath University, Falmouth University, the Welsh School of Architecture, the University of Gloucestershire and Cardiff University, over approximately 100 hours. Students experienced the day to day role of an architect, how inter-office working is achieved, as well as experiencing the social side of work.

In Leeds we worked closely with students from the University of Leeds. Attending and giving feedback on their final year reviews and end of semester crits, the team gave the students practical advice for the next steps in their careers.

Our Manchester team worked with second and third year students at Lancaster University and the University of Central Lancashire over three mentoring sessions helping them to prepare their portfolios and conducting mock interviews with them.

RIBA Preparing for practice event

Architect Simran Lall attended the Preparing for Practice event hosted by RIBA West Midlands and Birmingham City University, designed to support the next generation of architects. Alongside RIBA President Muyiwa Oki and leading architect Ken Shuttleworth, she had the opportunity to mentor students, giving them guidance on their portfolios and career journeys.

Our Communities

RIBA AHR Scholarship

Since 2008, the RIBA AHR Scholarship has championed talented individuals while driving meaningful change across the industry.

We created this programme because we believe exceptional talent shouldn't be limited by financial circumstances. Our profession is stronger, more innovative and better equipped to serve society when it reflects the full diversity of the communities.

More than financial support

For Part 2 architecture students from low-income backgrounds, the £7,000 scholarship relieves the financial pressure that can derail promising careers. The scholarship offers far more than funding, with personalised one-to-one mentoring and working as part of a team with experienced AHR architects over a four-week paid work placement.

Recipients gain the confidence, as well as real-world experience and professional connections that they can take forward in successful careers. The RIBA AHR scholarship enriches our practice with fresh perspectives and diverse voices that challenge our thinking and strengthen our work.

“It’s been rewarding to see Matthew’s confidence grow. Each time we met, his projects had moved forward, and it was clear he was taking feedback on board. To see those ideas develop into a strong portfolio has been fantastic.”

Manisa Mistry
Associate Director, AHR



“I’ve really benefitted from being able to ground my university projects by bouncing them off someone who’s working in practice all the time and gaining feedback from that has been really helpful.”

Matthew James
2024 RIBA AHR Scholarship recipient

Matthew’s journey

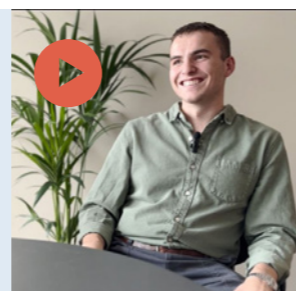
In 2025, we had the privilege of welcoming Matthew James, our 2024 RIBA AHR Scholarship recipient into our Leeds team. An architecture student at the University of Nottingham, Matthew was mentored by associate director Manisa Mistry, who watched him evolve and grow in confidence over his placement.

Together they worked on live project briefs, with Matthew contributing to the design of a new hospital car park and supporting our interior design team on a redevelopment project. Matthew found the placement so valuable he extended it for a further two and a half weeks.

Going forward, he has a more refined design approach and deeper insight into the pace and variety of real projects.

Matthew’s scholarship journey

Hear from Matthew and Manisa as they reflect on the value of mentoring, knowledge sharing and working together as part of a team.



In 2025:

7

apprentices supported
across our practice

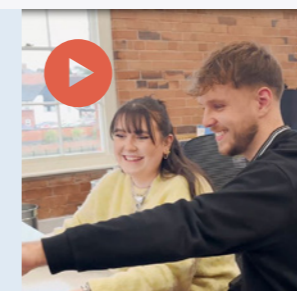
341

weeks of hands on learning
mentoring and professional growth



Championing inclusivity

Read more about how we build confidence and strengthen our capabilities through collaboration with our apprentices.



Our People

Apprenticeships

At AHR, we understand the value and importance of practical experience. Learning by tackling real challenges, working on live projects and collaborating with people who value and respect your ideas builds confidence and capability.

Alongside our mentoring and work experience programmes, our apprenticeships offer another meaningful route into the profession. They bring new perspectives, strengthen collaboration and help us shape places that respond to people and communities.

Developing both their technical expertise and confidence, our apprentices contribute to projects that shape how people live, work, and connect with their communities. In turn, they bring fresh energy to our practice and challenge our assumptions which helps us to become better mentors and more inclusive designers.

“Shadowing senior colleagues in the role has helped me learn how to solve different problems and be adaptable when various issues may arise on site.”

Tom Eastwood
Apprentice Building Surveyor



Our People

Investing in our people's growth

We actively champion our teams' professional development, through funded qualifications, study leave and a culture that values learning.

This commitment means having the time, resources and support to reach their full potential, whether they're taking their Part 2 or Part 3 architectural qualifications, progressing through their APC as building surveyors, or developing expertise in other specialisms.

We are a team of professionals continually enhancing our collective knowledge and staying ahead of evolving standards. Our growth makes us sharper, more innovative and better equipped to meet the complex challenges our clients and communities face.

Across the practice, we supported 17 colleagues in achieving professional qualifications, including Part 2 architects' students and building surveyors working towards their APC, as well as finance administration.



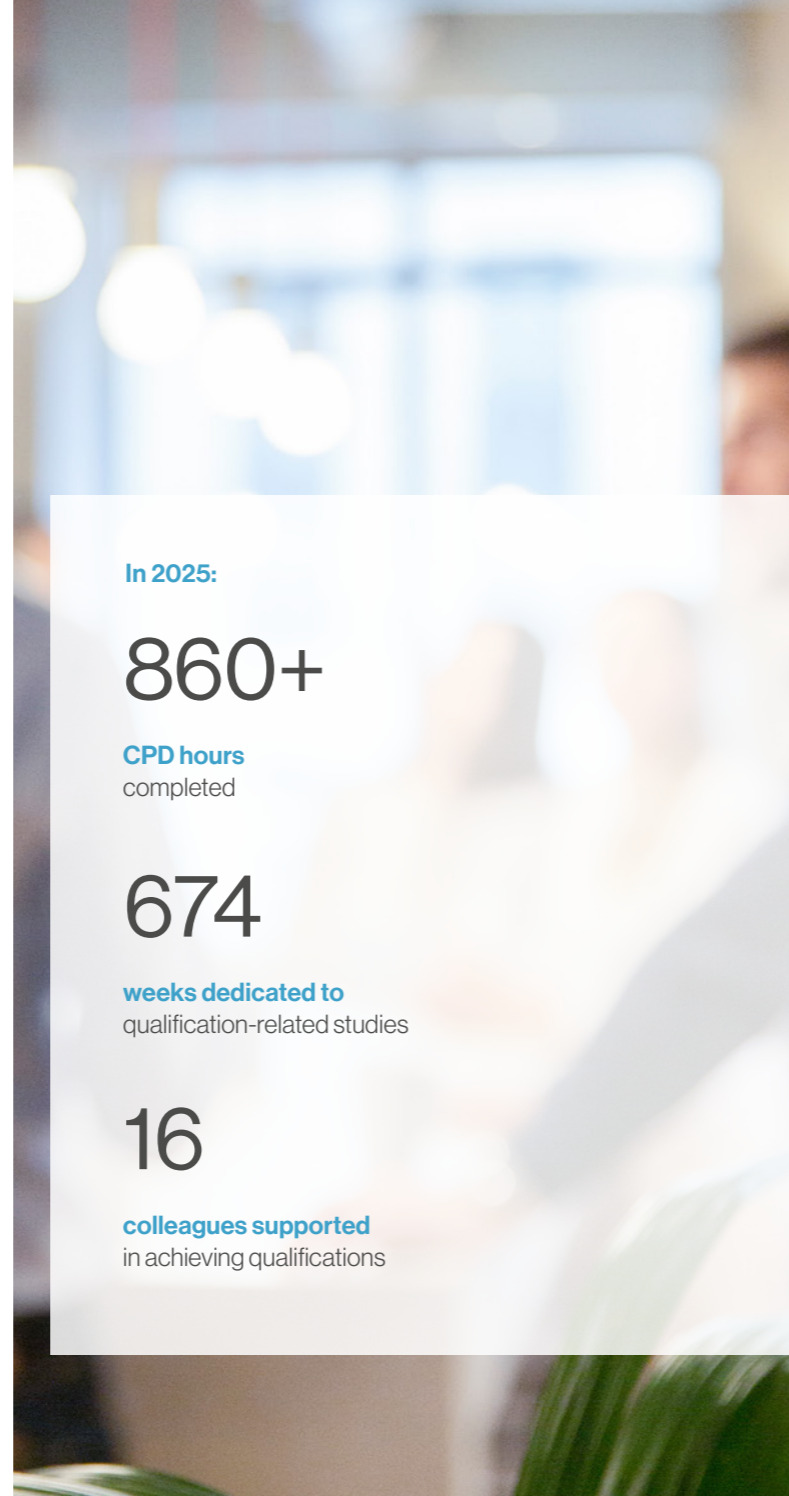
Inspiring the next generation of sustainable designers

Director and Head of Sustainability, Robert Hopkins, is now a Visiting Professor at the Manchester School of Architecture (MSA), a role that allows him to share what he's learned from decades of practice with the designers who will shape our sustainable future.

Building on his previous Royal Academy of Engineering Visiting Professorship at Cardiff Metropolitan University, Robert works with MSA students to demonstrate how sustainability is fundamental to creating places that perform well over time. Through tutorials on carbon literacy and sustainable design, he brings the classroom to life with insights from landmark projects like The Spine in Liverpool, and Woodmill and St Columba's RC High School, the UK's largest Passivhaus education building in the world.

This learning goes both ways, Robert is creating connections between students and our practice. Emerging professionals gain practical experience of live projects, while bringing their questions, idealism and urgency into our work. Their insight challenges us to think differently and reminds us why sustainability must remain at the heart of everything we do.

Through this collaboration our connection to academic research is strengthened and our work is grounded in what the next generation cares about. We are ensuring that future professionals are equipped to tackle the climate challenges we all face.



In 2025:

860+

CPD hours completed

674

weeks dedicated to qualification-related studies

16

colleagues supported in achieving qualifications

Our Work

Sharing expertise to shape a better built environment

Collaboration and knowledge sharing are central to our approach, driving positive change across the industry. In 2025, we continued engaging with peers through conferences and events, exchanging insights and expertise with professionals from diverse disciplines including architecture, surveying, construction, planning, development and asset management.



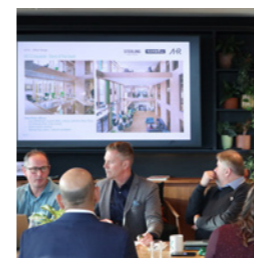
Decarbonisation roundtables

We continued our decarbonisation roundtable series bringing together professionals from across the built environment to share insights and explore how we can accelerate the transition to net zero.

Participants gained a clearer understanding of the evolving policy landscape, circularity as a practical pathway and the growing role of digital tools in improving building performance. We will continue this series in 2026 encouraging cross-disciplinary collaboration to driving meaningful change.

Shaping places where communities thrive

We created a seven-part thought leadership series and round-up report, examining placemaking as a long term, people-centred process, drawing on our expertise from across our teams, bringing together perspectives and insights into how vision-setting and stewardship combine to create meaningful, adaptable places.



Office 2035 roundtable

Alongside Ramboll and Sterling Properties we co-hosted Office 2035, a focused roundtable exploring the future of office spaces in UK cities.

Key insights centred on prioritising fundamental architectural qualities, long-term adaptability and early occupier collaboration as essential ingredients for creating viable, resilient workplaces.

Contributing insights to drive positive change

We actively contribute to industry dialogue through speaking engagements, panel discussions and conferences. These events allow us to share insights from our projects, exchange ideas with peers and advance best practice.

In February, we presented at the Education Estates SEND Conference on our work at Silverwood SEND School in Wiltshire. The session explored how inclusive, flexible design can create calm, supportive learning environments where every pupil feels safe and able to thrive.

Director, Imran Kassim, spoke at the Education Estates Conference about Wellfield Academy, one of the UK's first GenZero secondary schools. He shared how the project applies sustainable, nature-led design principles to create net zero carbon learning environments.

Director, Robert Hopkins, led a campfire session at Learning Places Scotland on trauma-informed and biophilic design in education. Drawing on our work at the University of Salford's Thrive Health and Wellbeing Centre, and how thoughtful design can support safety, dignity and belonging for all.

AHR Podcast

We continued the AHR Podcast, bringing together industry experts to discuss trends and challenges across the public and private sectors. Episodes covered a range of topics, including trauma-informed design, patient-focused healthcare and shaping an equitable and inclusive industry.

5

podcasts delivered in 2025

1,569





Our Work

Woodmill and St Columba's RC High School, Dunfermline, UK

Leading the way in sustainable, education design.

In 2025 the Woodmill and St Columba's RC High School in Dunfermline achieved Passivhaus Classic certification, officially becoming the largest Passivhaus education building in the world.

Our Work

Caledonia High School, Fife, UK

Inclusive learning environment.

Our long term partnership with Fife Council continues with the delivery of Caledonia High School. Targeted to achieve Passivhaus Classic certification, this new 1,735 place secondary school will replace the outdated Inverkeithing High School with a modern, sustainable facility designed to meet RIBA embodied carbon standards and the Scottish Futures Trust's net zero standard, supporting Scotland's net zero carbon goals.

Accessibility and inclusivity are central to the design, ensuring everyone who uses the building can move around the space with ease. Support learning facilities are integrated throughout, prioritising privacy during use and enabling every student to access the help they need.

The site offers ample space for landscaping, outdoor learning and sporting facilities, with views across surrounding farmland and towards Rosyth docks creating a meaningful connection to place. These outdoor spaces will support both curriculum delivery and student wellbeing.

Designed to integrate seamlessly with the local community, Caledonia High School will deliver an inclusive, sustainable learning environment where young people from all backgrounds are equally supported and able to flourish.



Recognised awards

Architect of the Year

Learning Places Scotland Conference and Awards

This award celebrates the collective strength of our education portfolio across Scotland, from pioneering Passivhaus schools to adaptable, wellbeing-led campuses that support evolving learning, teaching and community needs.



20%

improvement on
operational energy performance target

Opening in September 2024, we now have first year operational data from the 26,666 m² building. Figures show that it's operating around 20% better than its original energy performance target. This translates into warmer classrooms, cleaner air, lower carbon emissions and substantial savings for Fife Council. For the 2,450 pupils and staff inside, it means a building that simply works.

As designers we are immensely proud to have delivered what we promised, a sustainable, high-performing building that doesn't compromise on design quality while creating a comfortable place to learn and teach. This project proves that low-energy, sustainable buildings don't mean compromise.

The success at Woodmill and St Columba's RC High School demonstrates what's possible when sustainable design is treated as essential, not optional. It's a school that works hard for its community, proving its value from day one.



Our Work

Notre Dame Catholic Sixth Form College, Leeds, UK

Expanding opportunities for students and the community.

As part of our longstanding relationship with Notre Dame Catholic Sixth Form College, our building consultancy team delivered a new four-storey teaching block to accommodate growing demand for places.

Acting as project manager, principal designer and contract administrator, we led a multidisciplinary team to create 14 new teaching spaces with associated offices, breakout areas and reception space. We also delivered geomatic consultancy services and supported the college's successful application for DfE Post 16 Capacity Funding.

The project directly supports our commitment to championing a fair right to education for all. By expanding capacity in response to significant demographic growth in the region, we are helping to ensure more young people can access high-quality post-16 education. The inclusion of dedicated tutorial spaces better supports existing pupils' needs, while breakout areas encourage collaboration and social connection, creating an inclusive environment where every student can thrive.

The new building incorporates rooftop photovoltaic solar panels, energy-efficient LED lighting and air source heat pumps, making a positive contribution to the decarbonisation of the college's estate while reducing long term running costs and creating comfortable, modern learning environments.



Our Work

Supporting students beyond the building

Beyond project delivery, we are committed to supporting students with career development and employability skills.

Our building consultancy team have attended the multiple careers fairs at the college, discussing opportunities within architecture and building consultancy, and delivered employability sessions sharing advice on creating CVs and completing job applications.

This ongoing engagement reflects our commitment to championing a fair right to education for all, helping young people develop the skills and confidence to succeed in their chosen careers.





Building connections that strengthen society

We believe every space should inspire connection and belonging. By working alongside people from diverse cultures and backgrounds, we create places where everyone feels valued, heard and empowered to flourish.

This commitment shapes a society built on equality and mutual support. By embracing different perspectives we enrich our work and strengthen communities. We're continually evolving as a more representative organisation, one that delivers environments where diverse communities can thrive. Through collaboration and understanding, we enhance both the built environment and the lives of those who experience it each day.

In 2025:

200+

professional hours donating our services to local communities

19

different charities supported across the UK

17

fundraising events



Our Communities

Volunteering for community impact

As architects and building consultants, our skills can make a meaningful difference.

We have the opportunity to shape healthier, more prosperous communities by sharing our expertise where it is needed most. Through voluntary work, we partner with charities and community groups who may not otherwise have access to professional advice, helping them turn their ambitions into practical, deliverable solutions.

This approach benefits the communities we support and strengthens us as a practice. We gain fresh insights and a deeper understanding of communities we work with, making us a more inclusive, informed and well-rounded practice.

Templehall Gym

The new Templehall Community Hub in Kirkcaldy will become a vital addition to the community, allowing key services to collaborate and deliver support all in one space, for people from all generations and backgrounds. As part of the project, our Glasgow team provided pro bono planning and building warrant services for Templehall Community Gym's relocation into a former retail unit.

Part of the wider £13m Community Hub development, the existing gym required relocation, but wasn't included in the new facility's design. We helped transform an old annex office building into a fully functioning community gym in just five weeks.

As a result of this collaborative effort, the relocated gym is much better signposted and more accessible. Gym memberships have more than doubled in less than a year since opening, supporting the health and wellbeing of the Templehall community.

Honley Library

As part of an ongoing relationship with Honley Library, our building consultancy team provided free advice and expertise to the library for the third year running. Honley Library is a volunteer-run community facility in Huddersfield. Opened in 1936 and saved from closure in 2013 by dedicated volunteers (Friends of Honley Library), this essential hub serves the local community through library services, events, and activities.

[Read more about our community work with Honley Library here](#) →

LiTTLE Architects

Architects George Christodoulou and Will Horn volunteered with LiTTLE Architect, an organisation inspiring young people to explore architecture. Through hands-on activities including sketching and storytelling, they worked with 6-10 year-old children in bringing imaginative designs to life.

This initiative directly supports our social value commitment to enhance community wellbeing and prosperity. By nurturing curiosity and supporting youth learning through creative engagement, we're investing in future generations while making meaningful contributions to educational and social development.

SBY Interviews

Through SBY (South Bristol Youth), director Karle Burford conducted mock interviews with further education students, building their confidence and employability skills while providing valuable career preparation. SBY empowers young people in some of the most economically challenged areas of Bristol and Somerset to prepare for successful futures.



Our Communities

Team fundraising and collective giving

£25,652.60

given to support vital
charitable services and initiatives

Coming together to support good causes is something we truly value. From charity runs to bake sales and team challenges, fundraising is a great opportunity for our teams to connect and have fun while making a difference. All our teams across the UK relish the opportunity to unite and participate in fundraising activities as a practice, creating positive impact that extends far beyond our project work. These activities strengthen our practice wide culture of compassion and collaboration.

Some of the events from 2025 include:

- Charity runs for Arctic One Foundation and Cancer Research UK
- A five-a-side charity football match for SPUK
- Comic Relief and Endometriosis UK bake sales

Providing support when and where it's needed

Throughout the year, we respond to appeals and organise collections that provide direct, practical support where it's needed most. From stocking food banks to donating Christmas toys and school uniforms, these contributions help vulnerable families access essentials and experience moments of joy. Our 2025 collections supported Fareshare Southwest, Glasgow City Mission and the Wood Street Mission.

Practice wide giving

Each September, we gather over cake and conversations for Macmillan Cancer Support, raising £674 for the charity this year. Beyond the fundraising, these events highlight the vital work Macmillan does for people affected by cancer and foster meaningful conversations across our teams.

We also participated in Christmas Jumper day for Save the Children, raising £265 in 2025.



Our People

Stronger together through inclusion

Our commitment to diversity, equality and inclusion is inherent to all we do.

By celebrating different cultures and supporting career development for everyone, we unlock richer thinking and more imaginative solutions for the communities we design for.

A diverse, inclusive workplace makes us stronger. Different perspectives spark creativity, encourage healthy challenge and lead to smarter, more thoughtful outcomes. We create an environment where people feel they belong, can thrive and are confident sharing their unique views.

By embedding equality into our everyday practice, we ensure our work reflects the brilliantly diverse people and places we collaborate with. It helps us stay curious, responsive and connected to the real needs of communities across the UK.

Championing equality

This year marked our second annual internal International Women's Day panel discussion featuring diverse perspectives on equity, inclusion and representation within our industry. The panel shared valuable insights from their personal experiences, fostering open dialogue that helps us practice what we preach.

Celebrating diversity

Fundamental to our working ethos and environment is creating a culture where everyone is welcomed and everyone is celebrated.

With colleagues from cultural backgrounds spanning our offices, we've embraced the opportunity to mark various religious festivals together throughout the year.

During Ramadan, we supported our Muslim team members through flexible working arrangements. When it came time to mark Eid, our Leeds team hosted a celebratory lunch where everyone came together to share traditional dishes and stories.

At Christmas, our social committees transformed our offices with festive decorations and organised celebrations across the UK, a way to recognise the hard work and dedication our teams bring every day.

Leading positive change in our industry

Director Karle Burford is proud to be a member of the Bristol Property Inclusion Charter, an initiative dedicated to making the property sector more diverse, inclusive and accessible. Bringing together people and businesses, the charter is committed to driving real change in the sector.

Through this work, Karle shared his expertise with students from Orchard School in Bristol, guiding them as they developed sustainable redevelopment proposals for The Galleries Shopping Centre. This mentorship benefits both the students and the local community they're designing for.

In Greater Manchester, Michael Dunn contributes as a member of the local Building Equality committee, focusing on LGBTQIA+ inclusivity and equality within the built environment sector.

To support awareness of LGBTQIA+ pride, history and education, our Huddersfield team organised fundraising activities for The Brunswick Centre, a charity providing essential services to LGBTQIA+ young people, including HIV support and prevention.

We're committed to nurturing a supportive industry where people from all backgrounds can access opportunities and feel empowered to succeed.

Breaking down barriers and building inclusion



Listen to Karle and Michael discuss diversity and inclusion across the industry in our podcast episode, joined by surveyor George Hooton and architectural graduate Khwezi Mdlalose.

Our Work

Brabazon, Bristol, UK

New gateway driving regional economic growth.

This eight-storey Grade A office building forms the first major commercial development at Brabazon, Bristol's newest city neighbourhood. Seamlessly integrating with a new railway station, the 123,330 ft² building will become both a gateway to the community and a hub connecting transport, workplaces and public realm.

The building will help support up to 30,000 jobs across high value sectors including advanced manufacturing, technology and life sciences, driving significant economic growth across the region.

The building is targeting ambitious environmental certifications including BREEAM Outstanding, NABERS 5 Stars, WiredScore Platinum and WELL Enabled accreditation. A fabric first, all electric approach minimises operational energy use, while biophilic features including planted balconies on every level enhance biodiversity and occupant wellbeing. Extensive cycle facilities and direct station integration encourage sustainable travel, reducing car dependency.

Active ground floor uses including cafe and retail spaces bring areas to life as a social destination, creating a welcoming, accessible environment for workers, commuters and visitors alike demonstrating our commitment to places that enhance community prosperity and wellbeing.

The clinics will also play a key role in tackling health and social inequalities by providing public services on site, reducing waiting lists and increasing accessibility of community services. (01)



Our Work

Highgate Road, London, UK

Inclusive housing supporting independent living.

Responding to increasing demand for accessible, high quality housing in Camden, Highgate Road delivers 47 apartments, with ground floor apartments designed to support residents with assisted living needs, promoting independence and social integration within an urban community.

Working closely with Camden Council's Housing Team, we created homes where people of all ages and abilities can thrive. Assisted living residents benefit from a dedicated communal entrance, shared social areas and a private courtyard, while support staff have discreet facilities enabling care without compromising resident autonomy.

Low carbon measures including photovoltaic panels, heat pumps, energy efficient lighting and high performance glazing reduce environmental impact and running costs, demonstrating our commitment to creating inclusive, sustainable communities where everyone feels at home. (02)



Our Work

Elizabeth Quarter Police HQ, Scunthorpe, UK

Strengthening community
safety and regeneration.

2025 saw planning approval granted for this new three-storey police headquarters within the Elizabeth Quarter site, playing a vital role in Scunthorpe's broader town centre regeneration.

Strategically located at the heart of the town, the building will establish a strong, accessible police presence, improving security and service delivery for local residents.

The headquarters will accommodate 250 police officers and staff, with modern facilities designed to enhance operational effectiveness while prioritising occupant wellbeing and comfort.

To reduce construction costs and environmental impact, we repurposed existing site infrastructure and materials, demonstrating that sustainable design and social value work hand in hand.

Beyond improving policing facilities, the headquarters makes a significant contribution to the town's ongoing regeneration, supporting community safety, confidence and prosperity.

This project reflects our commitment to using our expertise to address social issues, creating safer, more resilient communities while supporting the professionals who serve them. (03)



Our Work

Leek and Trestle Markets, Staffordshire, UK

Heritage preservation
supporting local enterprise.

The refurbished Victorian Trestle Market and Butter Market in Leek delivers flexible spaces for business and community use alongside enhanced customer experience, safety and security.

Our building consultancy team delivered an initial RIBA Stage 2 feasibility report, outlining design options and recommendations aligned with our client's key objectives.

Appointed for RIBA Stages 3, 4 and 5, we managed refurbishment works including renewed retail frontages and new food and beverage outlets. Collaborating with Speller Metcalfe, Alliance Leisure and Abacus, we delivered the project through to completion.

Sustainability measures support Staffordshire Moorlands District Council's net zero targets, including solar panels, air source heat pumps and improved roof insulation at Trestle Market, significantly reducing operational energy use.

This transformation creates welcoming, accessible and future-proofed facilities where diverse communities gather, supporting local economic growth. (04)





Improving quality of life

We put people at the heart of our work, aiming to enhance their physical, mental, and social wellbeing. Our role goes beyond just design. We create spaces and support initiatives that inspire active lifestyles, promote positive mental health and strengthen community ties.

People's health, wellbeing and prosperity is underpinned by our commitment to sustainability, inclusivity and social value. This approach strengthens the communities we work with and empowers our people, helping them feel valued and see the positive impact of what we do every day.

Fostering a supportive working culture

The health and wellness of our people is always a priority, as it's the foundation for creating the best solutions for our clients. We work hard to promote a positive, supportive culture across all our offices. Our dedicated team of Wellbeing Champions, alongside two fully trained Mental Health First Aiders are always on hand to offer support and guidance.

Throughout the year we create space for meaningful and open connection, time to reset, helping our people look after themselves and one another. For health and nutrition week our Leeds team had an office-based Pilates class followed by a healthy breakfast, while in Bristol, the team took time out for a yoga class for World Mental Health Awareness week.

Our employee benefits package includes private medical insurance, an employee assistance programme and access to a wellbeing app that offers a range of resources, from remote GP appointments and physiotherapy to mental health support, wellness content, and lifestyle coaching.



Connections beyond the workplace

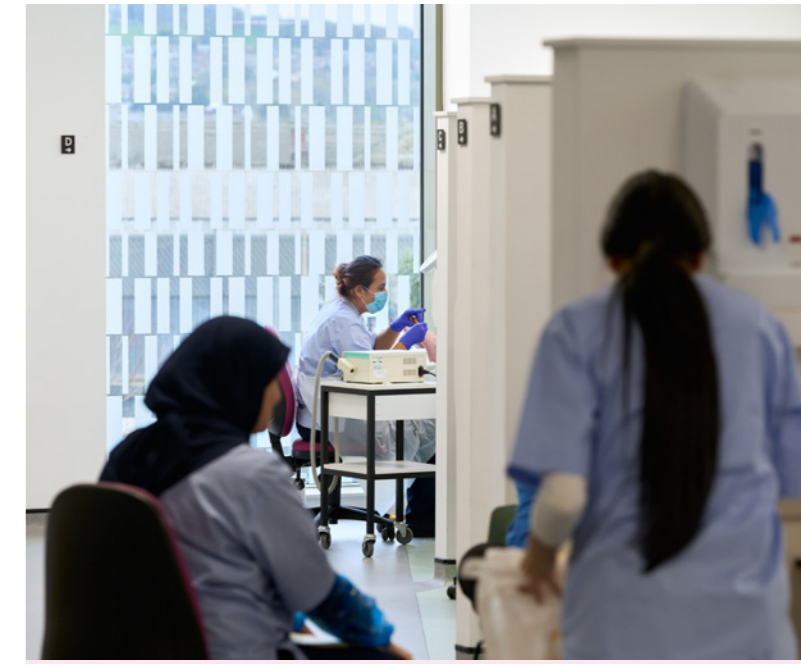
We understand that when we can connect with our colleagues away from the working environment, having fun along the way, we collaborate better and create the best work we can. Our social activities and team days give colleagues the chance to connect as people, building the trust and understanding that makes our project work stronger.

Regional sporting events bring out friendly competition whilst strengthening bonds between offices. This year's cricket tournament saw Lancashire claim victory over Yorkshire, evening the score after last year's Yorkshire win. Our Huddersfield and Leeds teams showed determination on the golf course, making the most of brief sunny intervals between the inevitable British showers.

Creative workshops offer different ways to connect and unwind. Our Huddersfield team discovered new talents through needle felting, crafting Halloween decorations whilst sharing stories and building friendships that extend well beyond the workshop.

Summer team days provide a mid-year opportunity to recharge and connect. Bristol, London and Cardiff colleagues came together for a barbecue in the sunshine, while our Shrewsbury and Birmingham teams explored Chester market before heading to the races.

Christmas celebrations welcome everyone to participate in ways that suit them. From festive meals and football matches to bake sales and charity fundraising, these activities remind us that we're a community that cares about each other's wellbeing.



Our Work

Daphne Steele Building, Huddersfield, UK

Training tomorrow's healthcare workforce.

In September 2025 the Daphne Steele Building achieved WELL Platinum certification. Part of the University of Huddersfield's National Health Innovation Campus, the building sets a new benchmark for healthcare education in the UK. Developed through a pioneering public-private partnership with the NHS, the 10,000 m² facility will support a 60% increase in trained healthcare professionals within five years, directly addressing critical NHS workforce shortages.

With state of the art medical training facilities, healthcare students are given the best start to their careers. High-fidelity simulation spaces provide immersive training and a full-scale ambulance replica ('simulance') enables students to experience real working conditions before entering practice.

The building's social value extends beyond education. Public-facing clinical facilities including podiatry and community diagnostic services, improve local healthcare access, embedding the university as an active community partner.

Biophilic design principles enhance people's wellbeing throughout, with planted green walls, natural materials and panoramic views across Huddersfield's landscape. An all-electric strategy with air-source heat pumps and smart systems reduces operational energy while maintaining optimal comfort.

This project reflects our commitment to enhancing community health and prosperity, training the professionals our NHS desperately needs while improving local healthcare provision.



“It is a transformative project for the people of the region that improves health outcomes and leads innovation in healthcare for the North of England, the UK and internationally.”

Professor Liz Towns-Andrews
Regional and Business Lead, National Health Innovation Campus



Managing one the UK's healthiest buildings



WELL Platinum accredited, The Spine in Liverpool

Hear from Cathy Hardman, Workplace Manager at the Royal College of Physicians, as she shares her insights into what it is like to operate and manage this people-focused, high-performance workplace and the value of post-occupancy evaluations in driving continuous improvement.



Our People

Sustainability

Sustainability is integral to how we work and embedding sustainable development principles is at the heart of our practice.

Led by our sustainability group and supported by Sustainability Champions across each of our offices, we believe that sustainability and social value go hand in hand. That's why we pride ourselves on our inventive, collaborative approach, to create places that support both environmental goals and community needs.



Positively contributing to regional growth



Director and head of sustainability, Robert Hopkins leads our sustainability initiatives throughout the practice and beyond.

Rob develops energy-efficient designs that cut costs, improve air quality and create healthier places. His collaborative approach has helped to shape the UK Green Building Council's Net Zero Building Standard, whilst the development of our Retrofit Toolkit helps clients transform existing buildings responsibly.

Rob's latest work on trauma-informed design offers practical ways to apply these principles, showing how design can promote healing, support mental health and wellbeing.



Gurminder Sanghera is actively involved in the Leeds Property and Economic Forum, where he leads the sustainability group.

His work with the Leeds Climate Coalition, Climate Emergency Advisory Committee and West Yorkshire Combined Authority's Nature Recovery Strategy Expert Panel drives meaningful change across communities.

This expertise attracts forward-thinking clients and establishes us as thought leaders. Our people find purpose knowing their work creates a real impact, whilst communities enjoy spaces that are designed to improve their health and daily life.



Recognised awards

Net Zero Architect of the Year

Building Design Architect of the Year Awards

We're proud to have won this award as it demonstrates the holistic approach we take to net zero design, creating efficient, innovative buildings that perform and adapt. From WELL Platinum net zero carbon buildings, to the world's largest Passivhaus-certified education building, our work combines design excellence, collaboration and technical advancements to drive measurable progress towards net zero.



“A most impressive range of projects, all displaying a high degree of design excellence and integrity.

This was combined with exemplary rigour in the targeting and measurement of embodied carbon and energy performance in the submission. Working with difficult sectors and government backed projects, and delivering net zero is an achievement in itself.”

Judges Comments

Building Design Architect of the Year Awards

Our Work

Making measurable progress towards net zero

We're cutting our carbon footprint and moving towards net zero by 2030 through accountable action.

During the last reporting year:

- 9%** **scope 2 reduction**
Through the removal of on-site servers and a transition to cloud-computing
- 16%** **scope 3 reduction**
Stabilisation of hybrid-working and changes to UK Government Conversion Factors
- 5%** **decrease in business travel**
Signalling a shift towards smarter, more sustainable ways of connecting in person

As signatories to the RIBA 2030 Climate Challenge and Architects Declare, we're committed to leading by example in our industry.

Our Carbon Reduction Plan, maps our journey to carbon neutrality across operations and declared Scope 3 activities. We track progress annually against RIBA and RICS targets, keeping us well ahead of the Climate Change Act's 2050 requirements whilst maintaining the excellence our clients expect.

This systematic approach reinforces our reputation as a responsible practice whilst inspiring our people to champion sustainability in their own lives. Every tonne of carbon saved contributes to healthier air, stable climates and thriving environments for the communities we serve.





Our Work

The Countess of Chester Hospital Women and Children's Building, Chester, UK

Pioneering, sustainable maternity care for families.

The first building in England approved under the NHS Net Zero Building Standard, this new maternity and neonatal facility transforms care for families across Chester and surrounding rural communities and demonstrates how sustainable healthcare can enhance wellbeing without compromise.

Working collaboratively with clinical teams, patients and families, we created calm, restorative spaces where dignity and comfort sit at the heart of care. Single en-suite rooms, family overnight spaces and staff wellbeing areas respond sensitively to the needs of everyone using the building.



Low carbon concrete, air-source heat pumps and photovoltaic panels reduced upfront carbon by 25% while achieving BREEAM Excellent. An impressive air tightness rating of 2.4 delivers 220 MWh annual energy savings, cutting operational costs and emissions.

This project reflects our commitment to improving lives and protecting the environment. By embedding sustainability from day one alongside people-focused design, we're helping the NHS deliver outstanding care within safe, healthy buildings that support communities for generations.



Our Work

Buxton House, Huddersfield, UK

Community-led transformation delivering safer, sustainable homes.

Working with Kirklees Council, our building consultancy team are leading a multidisciplinary team delivering complete remodelling and enhancement works at Buxton House, an 11-storey residential block dating from 1968. The transformation prioritises improved fire safety measures, enhanced living spaces and resident wellbeing.

Using our Retrofit Toolkit to decarbonisation, Kirklees Council reviewed their assets in a strategic way and made an informed decision as part of their estates strategy to remodel rather than demolish the existing tower. Photovoltaic solar panels and energy-efficient systems will enable residents to run their homes sustainably, reducing costs and carbon emissions. The scheme proactively addresses requirements of the Building Safety Act.

Part of Kirklees Council's wider Huddersfield Blueprint, a ten-year vision to enhance Huddersfield town centre, Buxton House demonstrates our commitment to resident-led design, creating comfortable homes where communities thrive while protecting the environment for future generations.



Continuing our social value journey

As we reflect on the significant progress made in 2025, we take pride in our achievements that have enhanced the health, wellbeing and prosperity of the people who use our places and the communities we work in.

We look forward to continuing to build upon our three objectives, through 2026.

Stay connected by following us on our social media channels for all the latest updates.

 www.linkedin.com/company/ahr/

 [@weareAHR](https://www.instagram.com/weareAHR)