

Building  
Consultancy

Sectors and  
Services Experience



# Shaping better futures



# Improving, maintaining and enhancing communities

Our building consultancy team is driven by seeing the positive impact of our work. Our goal is to improve, maintain and enhance communities.

Within an industry and environment that doesn't stand still, we're enthused by the variety of our work, and seeing our team develop, providing practical, creative and sustainable solutions. As well as ensuring we exceed expectations on every project, we add social and environmental value wherever possible.

With skills and expertise that cover the full range of the built environment, from advising on new environments and caring for existing buildings to enhancing the fabric of our communities, we offer a comprehensive set of specialist services, all designed to help realise the full potential of any project.

We love the diversity of our work and enjoy collaborating across disciplines and engaging with our clients to create intelligent and imaginative solutions, in a variety of sectors, across the UK.

Building consultancy has been a central part of our practice since 1835. As our world changes, we consistently evolve, embracing innovative tools and technologies. These allow us to find inventive ways to assess and reimagine all kinds of sites and structures and provide more immersive and efficient ways of working with our clients.

We create new environments and care for existing buildings to enhance the fabric of our communities. Above all, we are always looking to do things better, and more efficiently, combining professionalism with technical competence.

180<sup>YRS</sup>  
Experience

9  
UK  
Offices

270<sup>°</sup>  
Members  
of Staff



# Transforming the way spaces are brought to life

We build on lessons learned over years of experience to deliver improved outcomes and achieve greater value to our clients.

We invest in innovative technologies and make smarter use of materials, to reimagine new and existing spaces.



## Virtual Reality

Whilst virtual reality is commonplace in multimillion pound projects, we have developed the skills and expertise to deliver this experience for any scale of project, adding significant value in terms of stakeholder engagement. It allows clients to step into their new or refurbished space and fully appreciate and critique the design, whilst removing the need for costly design change on site. The use of gaming technology provides a truly interactive experience to test the functionality of the design.



## Digital Estates

Our long term investment in digital technologies is driving us towards the creation of a digital estate. The consolidation of digital mapping, laser scanning and building information models is allowing us to create accurate 3D models of entire campuses, town and city quarters. With the advent of the Government Geospacial Commission and the drive to use data more effectively, we believe there will be significant development in this field in the coming years.



## Visual Programming

We recognise that the hard lines which existed between the professions and skill sets are rapidly blurring, now more so than ever in the field of programming. Closed API, out of the box software is in the decline and we are working hard to leverage the software we use every day to develop new ways of working. Our surveyors, designers and developers are combining their skills to deliver projects more efficiently and create new client propositions. Recent examples of this include interactive ownership maps and automation of repetitive design tasks.



# Understanding the full lifecycle of the built environment

We offer a comprehensive set of building consultancy services, from advising on new buildings to refurbishing existing spaces. Our goal is to help realise the full potential of any project.

## Building Surveying

- Building Surveys
- Defect Analysis
- Dilapidation and Schedules of Condition
- Expert Witness
- Party Wall Matters

## Conservation and Heritage

- Significance and Understanding
- Survey and Analysis
- Grants, Funding and Legislation
- Repairs, Maintenance and Development

## Design and Contract Management

- Project Design and Management
- Contract Administration
- Employer's Agent

## Geomatic Consultancy

- Measured Building Surveys
- Scan to BIM and Digital Twins
- Topographical Surveys
- Utility Mapping and CCTV Surveys
- Reality Capture
- Drone Surveys

## Principal Designer and CDM Advisor

- Principal Designer
- CDM Client Advisor

## Property and Asset Management

- Strategic Advice
- Portfolio Maintenance Management
- Asset Management
- BIM FM (Facilities Management)





# Connecting people, places and the environment

We provide a full range of services, across multiple sectors, striking a perfect balance between the creation, restoration, regeneration and ongoing maintenance of places.

## Transport Infrastructure

- Trespass Audits
- Automatic Ticket Gates
- Customer Waiting Facilities
- Ticket Offices
- Retail Facilities
- Entrances and Remodelling
- Conservation and Heritage
- Accessibility
- Feasibility Studies
- Cycle Provisions
- WC Refurbishment

## Residential

- Refurbishment and Remodelling
- Repair and Maintenance
- Window and Door Replacement
- Accessibility Adaptations
- Independent Living
- Communal Spaces
- Assisted Living
- Housing Associations
- Local Authorities
- Retirement
- New Build
- Employer's Agent
- Carbon Reduction and Retrofit
- Fire Improvement
- High Rise Refurbishment

## Schools and Academies

- CIF and Capital Funding Support
- Support for Growing Academy Trusts
- Condition Surveys
- Roofing Works
- Extensions
- Refurbishments
- Entrances and Remodelling
- Boiler Replacement Accessibility
- Development Plans
- Sports Facilities
- Modular Solutions
- Block Replacements
- Heating and Electrical Upgrades
- SEND Schools

## Colleges

- Colleges and Sixth Forms
- Classrooms
- Teaching Spaces
- Offices
- Sports Facilities
- Arts and Performance Spaces
- Accessibility
- Extensions
- Refurbishment and Remodelling
- Entrances and Receptions
- Condition Surveys
- T-level Capital Funded Projects
- FECTF Funded Projects

## Universities

- Repair and Maintenance
- Teaching Spaces
- Laboratories
- Office and Study Space
- Extensions
- Refurbishment and Remodelling
- Estate Development
- Sports Facilities
- Dining and Retail Facilities
- Libraries
- Conference Centres
- Lecture Theatres
- Condition Surveys

## Civic and Community

- Conservation and Heritage
- Offices
- Fire and Rescue
- Sports and Leisure
- Local Authorities
- Justice and Defence
- Accessibility
- Feasibility Studies
- Refurbishment and Remodelling
- Carbon Reduction
- Retrofit

## Sports, Leisure and Hospitality

- Specialist Sports Facilities
- Repair and Maintenance
- Principal Designer
- Lottery Sports Fund
- Refurbishment and Remodelling
- Sports Pitches
- School Sports Facilities
- Leisure Centres
- Spa Facilities

## Healthcare

- Ward Relocation
- Specialist Equipment
- Estate Development
- Refurbishment and Remodelling
- Repair and Maintenance
- Sustainability
- Condition Surveys
- Feasibility Studies
- Conservation
- Backlog Maintenance

## Retail

- Dilapidation
- Schedules of Condition
- Contract Administration
- Project Management
- Reconfiguration
- Measured Surveys
- Portfolio Management
- Repair and Maintenance
- Internal and External Decorations
- Remodelling

Building  
Consultancy

Our  
Specialisms



# Services



## Building Surveying

Our team of building surveyors are dedicated to helping clients protect, care for, and manage their properties over the long-term. Using decades of collective experience and specialist knowledge, we provide a full range of services designed to minimise potential challenges and keep projects on track.

“I have worked closely with AHR on numerous educational schemes, more recently on a secondary school expansion project, utilising modern methods of construction. The facility was completed on time, within budget and achieved a robust standard of finish throughout. The school staff, pupils and visitors have marvelled at the quality. I would not hesitate to recommend AHR as a professional multidisciplinary organisation.”

**Rob Fox**  
Programme Manager, Calderdale Council



### Building Surveys

Our experienced chartered building surveyors carry out a full range of surveys across buildings of all types and scales. Our services start from pre-acquisition and condition surveys for individual properties to the inspection of whole portfolios, as well as ad-hoc surveys and advice focused on specific issues.

### Defects Analysis

Our varied experience across many different building types and construction methods gives us the insight needed to carry out detailed building pathology and analyse any building defects. We accurately pinpoint the cause and potential effects of any issue found, before recommending effective and practical solutions to put them right.

### Dilapidation and Schedules of Condition

Our team have the experience and expertise to assess and investigate claims for dilapidations for all types of buildings, providing sound advice to clients on the merits of disputed cases. We prepare and negotiate Schedules of Dilapidation, including pricing the schedule and settling the claim, as well as provide Schedules of Condition to assess and record a property's condition at a specific point in time, such as at the commencement of ownership or leasing.

### Expert Witness

Our expert witness reports provide expert, unbiased advice on construction and property related disputes, addressing issues such as professional negligence in surveys, design and administration, defective building works, and buildings in disrepair. We act on behalf of landlords and tenants in dilapidations disputes and provide specialist opinion on the merits of a case in court proceedings, appearing in court as a personal representative if needed.

### Party Wall Matters

With a detailed understanding of the Party Wall etc. Act 1996, we provide reliable and expert advice to those contemplating works or those affected by proposed works, acting for building owners and adjoining owners as appropriate and as the agreed surveyor. We then negotiate and issue Party Wall Awards.



## Conservation and Heritage

Our specialist conservation and heritage team is passionate about giving new life to the places and spaces forged in the past, making them relevant and functional for today. We understand how history connects us to a meaningful past and we appreciate the sense of community ownership which can be gained from celebrating the roots of local culture.



### Significance and Understanding

Our first task is ensuring that we have a complete understanding and appreciation of a site's historic and cultural links, as these are key to its sustainable management. Research, audits, and assessments help us understand any building and inform decisions needed to secure its future. Conservation Statements, Conservation Management Plans, and Conservation Area Assessments are all vital here.

### Survey and Analysis

With a wealth of knowledge and experience in historic sites their construction, context and issues which affect them, we use our specialist equipment and technical expertise to carry out detailed analysis, surveys and investigations. We offer historic, condition, and measured building surveys, recording and analysis, BIM and photometric scanning, and quinquennial inspections.

### Grants, Funding and Legislation

We have a successful track record in sourcing and managing grants for repair and conservation projects and have helped clients secure grants and funding from sources including local government, Historic England, Heritage Lottery Fund. This is supported by our experience in offering planning and development advice for listed buildings and conservation areas, including specialist experience in dealing with faculty jurisdiction and the separate planning laws governing church buildings.

Our services include Planning and Listed Building Applications, discharging planning and listed building conditions, planning appeals negotiations regarding enforcement notices, specialist advice on churches, including ecclesiastical exemptions, and advice on delisting and Certificates of Immunity. We also advise local authorities, acting on their behalf or providing specialist advice to augment their own services.

### Repair, Maintenance and Development

Our specialist team is well equipped and knowledgeable of historic repairs and building works of all ages and sizes. It is essential that repairs, maintenance, and development should not only be sympathetic to a site's heritage but also consider the simplification of building services, to ease long-term maintenance. We can also advise on the development potential of protected sites in areas that may be historically sensitive, skillfully interpreting briefs, to enable continuing or new uses for historic buildings. Our services in this area include pre-purchase conservation, planning, development and design advice, listed building and conservation area applications, and local authority negotiations where proposals involve heritage assets.



## Design and Contract Management

Our teams of chartered building surveyors have comprehensive knowledge and expertise to handle every project, no matter the scale, supporting clients and every stage from inception to final completion. We provide a range of specialist services that include the protection, management, and development of individual properties and whole estates, supporting and helping clients at each step.

“AHR has supported North Lincolnshire Council through their professional services framework since 2015 and have consistently demonstrated an exemplary and reliable service in supporting the Council across various services and sectors and I would be pleased to recommend them in the future.”

**Nadine Byrne**  
Business Services & Framework Lead



### Project Design and Management

We pride ourselves on offering a single-source solution, working in partnership with developers, property managers, and occupiers, to deliver new build, refurbishment, repair, and maintenance projects. We support our clients throughout the project lifecycle, with the development and interpretation of ideas, into concept visualisations, and feasibility studies, with realistic and accurate cost advice. We understand how vital it is to keep clients closely involved throughout a project, from development and planning to managing contractor procurement, overseeing the actual works to handover and finalising of the contract. Our teams carefully control each stage of a programme to deliver on time, within budget, and to the highest quality standards.

### Contract Administration

Our teams specialise in the administration of a whole range of building works contracts, from traditional JCT to NEC. We take a hands-on approach to managing any contract to ensure that both client and contractor meet their obligations under the terms of the building contract.

### Employer's Agent

Our employer's agent service sees us looking after every aspect of contract administration, with everything taken care of and nothing overlooked. We can consider and select tenderers and contractors, prepare all tender documentation, including the employer's requirements, analysing tenders and making appropriate recommendations for our clients.



## Geomatic Consultancy

With pinpoint accuracy and meticulous attention to quality, our geomatic consultancy team embrace the latest technology in the field of geomatics and reality capture, providing digital environments and immersive experiences to our clients. As well as using geomatics to visualise their solutions, with these models and data, our clients can gain a deeper awareness of their buildings and wider surroundings.



### Scan to BIM and Digital Twins

For the development of existing buildings, we use laser scanners to accurately and quickly capture data to create a 3D point cloud model. A point cloud is a set of millions of spatially correct data points, representing the project geometry. This information forms the dimensional basis for a BIM model. Although the design industry standard is Revit, 3D models are available in a number of differing formats. The next evolution of the BIM survey model is the digital twin, a living digital representation of a real-world asset. While scan to BIM gives us the base structural geometry, the digital twin contains the elements any building requires to operational. These include electrical systems, fire systems, heating systems and all the other operational elements the client requires. Through smart building links, it becomes possible to extract live operational data from the building and lever all the benefits that it brings.

### Topographical Surveys

Before embarking on any construction project, it is essential to have a complete picture of your surroundings – to know quite literally the lay of the land. We offer topographical surveys incorporating all relevant survey details applicable to your project, such as the position of services, building orientations, boundaries, major roads and ecological systems. We can produce a range of deliverables, from a simple 2D drawing to a 3D digital terrain model with the corresponding topographical detail.

### Reality Capture

With reality capture, we collect accurate, high-quality information of the existing environment. This includes complex geometry, imagery, and building data, or any combination of these. We have both the experience and technological tools to excel at this and can deliver this data in a variety of formats, whether it is geometry captured through the use of mobile laser scanners, terrain models from a drone or the creation of a photographic virtual tour using a 3D camera.

### Drone Surveys

Unmanned Aerial Vehicles (UAVs) bring a unique and indispensable perspective to any project, offering access to dangerous or inaccessible areas. With advancing technology enabling the incorporation of more complex sensors, the data captured is increasingly varied and sophisticated. As well as imagery, drone survey technology can produce point clouds, intricate meshes and 3D models of buildings and the surrounding environment.

### Measured Building Surveys

Measured building surveys are an essential tool in the refurbishment, alteration or redevelopment of any property. Should the building be of any historic interest then a quality survey will act as a record to preserve the building for future generations. With survey data collected, it is possible to create an accurate 2D drawing or 3D model of the existing spatial and constructional arrangements. These details may also include sections and elevation information, together with dimensional analysis of fixtures, fittings, services and plant for example.

### Utility Mapping and CCTV Surveys

What lies beneath the surface can have as big an impact on the project as what sits on the surface. Our investment in the latest Ground Penetrating Radar (GPR) and CCTV technology, alongside the highest levels of training, ensures that the best possible results are achieved. Unseen risks can be greatly reduced when combined with our topographical services to create a fully comprehensive picture.



## Principal Designer and CDM Advisor

Acting as principal designers under updated CDM (Construction, Design and Management) regulations, we fully integrate health and safety throughout the entire process.

We make sure not only that all legislation is met but also add value to every project. We support clients to fulfil their duties under the regulations, with the benefit of our vast expertise in design, occupational safety, construction safety, risk assessment and end-user documentation.

“AHR has proven to be an excellent business partner with a particular emphasis on site safety. Their expertise and commitment to the project is a major factor in achieving practical completion of complex and diverse challenges. The team has done a fantastic job and always acted in a professional and supportive manner.”

Shaun Hodson  
WDH



### Principal Designer

Our skilled principal designers bring valued practical knowledge about all construction and design projects as both highly qualified health and safety experts and chartered building surveyors. We are proud to be qualified members of the Association for Project Safety (APS), as well as the Institution of Occupational Safety and Health (IOSH).

We provide a service that addresses our obligations, all the while independent of the designer, and offer independent and impartial help in dealing with principal and other contractors. Taking a proactive, positive, and practical approach to implementing CDM Regulations helps us to minimise bureaucracy while never losing sight of the importance of health and safety.

### CDM Client Advisor

Revised CDM Regulations introduced in 2015 saw more duties and responsibilities placed with clients, including being criminally accountable for their approach to health and safety across the life of a project. Our team of experienced and highly-skilled health and safety advisers, offer easy-to-understand advice and invaluable assistance that relieves the pressure on clients by ensuring they carry out their exact duties and comply with all required regulations.



## Property and Asset Management

Our property and asset management team take a holistic approach, drawing on our multidisciplinary and cross-sector expertise to offer a comprehensive range of proactive and innovative management and consultancy services including strategic advice, asset management, portfolio maintenance management and BIM FM (Facilities Management).

“AHR successfully led the design of several Independent Living Schemes for WDH. They successfully managed the multidisciplinary design team and worked collaboratively with the WDH project team to deliver accommodation that enables residents to live independently. The designs are wheelchair and dementia friendly, with communal areas.”

**Martin Symons**  
Senior Project Officer, WDH



### Strategic Advice

Our experience tells us that a strategic approach is best to manage property portfolios as this prioritises long-term value and efficiency for clients. With up-to-date knowledge of the latest industry movements and trends, as well as regulatory changes, we act as insightful partners to our clients, providing strategic property advice relating to portfolio rationalisation, strategic work programming, and flexible design.

### Asset Management

We understand that asset management starts at the point of purchase, and advise on the selection, design, development, maintenance, inspection, and renewal of assets, to determine their operational performance and profitability. Benefits of our asset management service include the release of capital for reinvestment or debt reduction, efficient running and costs, better service provision through improved properties, and the co-location of services.

### Portfolio Maintenance Management

We can undertake careful inspections to see what maintenance is required, before supporting our clients to strategically programme their works, and complete them. Specialising in both planned preventative maintenance (PPM) and backlog maintenance, we manage repairs that are long overdue, as well as identifying and scheduling those needed in the future.

### BIM FM

We have long been advocates of the benefits of BIM in the design and construction process and are now taking the use of this innovative technology further, applying the rich data gathered into the operational phase of the building. Collaborating with a number of partners, we offer a BIM FM solution to clients, with many advantages and efficiencies that can be gained as a result.



Building  
Consultancy

Project  
Experience



Sectors

## Transport Infrastructure

Trespass Audits  
Automatic Ticket Gates  
Customer Waiting Facilities  
Ticket Offices  
Retail Facilities  
Entrances and Remodelling  
Conservation and Heritage  
Accessibility  
Feasibility Studies  
Cycle Provisions  
WC Refurbishment

01 Stoke-on-Trent Station  
02 Manchester Airport Framework  
03 Kings Cross First Class Lounge  
04 Huddersfield Railway Station



### Transpennine Route Upgrade

The Transpennine Route Upgrade (TRU) involves a ten year £2.9 billion programme of rail improvement in North England. We are a design partner on the TRU, working on the programme to upgrade the railway between York and Manchester via Leeds and Huddersfield to provide greater reliability and connectivity, faster journeys and higher performance. The route covers 76 miles of track, 25 stations, 8 tunnels, 15 viaducts and 270 bridges.

### Kings Cross Station - First Class Lounge

We were commissioned as interior designer to deliver the concept design for a scheme which involved refreshing the first-class lounge at Kings Cross Station in London. The scheme involved a full redecoration, new furniture and flooring. As the station is Grade I Listed, our design is sympathetic to other features of this historic building. (03)

### Manchester Airport Framework

Under a longstanding framework with MAG, we deliver building surveying, architectural and principal designer services on various projects. The framework appointment also includes the provision of scan to BIM services. Services are provided at Manchester, East Midlands and Stansted Airports. We have been reappointed to this framework several times in succession since 2002. (02)

### Transpennine Express - Huddersfield Railway Station Refurbishment

Lead designer, principal designer and project manager for the installation of three new waiting room shelters to the main platforms, and also refurbishments to the first class lounge, customer facilities and ticket hall. (04)

### West Yorkshire Combined Authority 'Smart 5' Shelters

Programme of extensive upgrade and refurbishment works to approximately 550 bus shelters, in line with West Yorkshire Combined Authority's objectives to provide passenger transport infrastructure which is fit for purpose, safe to use and maintains public confidence.

### Transport for Greater Manchester - Cycle Centres and Modular Hubs

We developed concepts for new bespoke cycle centres for sites including Altrincham and Bolton, as well as refurbishment options and smaller modular facilities that could be tailored in size and arranged to fit a variety of sites.

### Great Western Railway - Station Improvement Works

Appointed to deliver a large number of projects across the Greater Western Railway franchise. These include improvements to customer facilities, new automated ticketing machines, new waiting shelters, main concourse refurbishment, car park improvements, access works, smart ticketing, stock condition surveys, and redecoration.

### West Yorkshire Combined Authority - Edgerton Tram Shelter

Provided a feasibility study, contract administration and consultancy services in order to fully repair and restore this unique Grade II listed Victorian tram shelter.

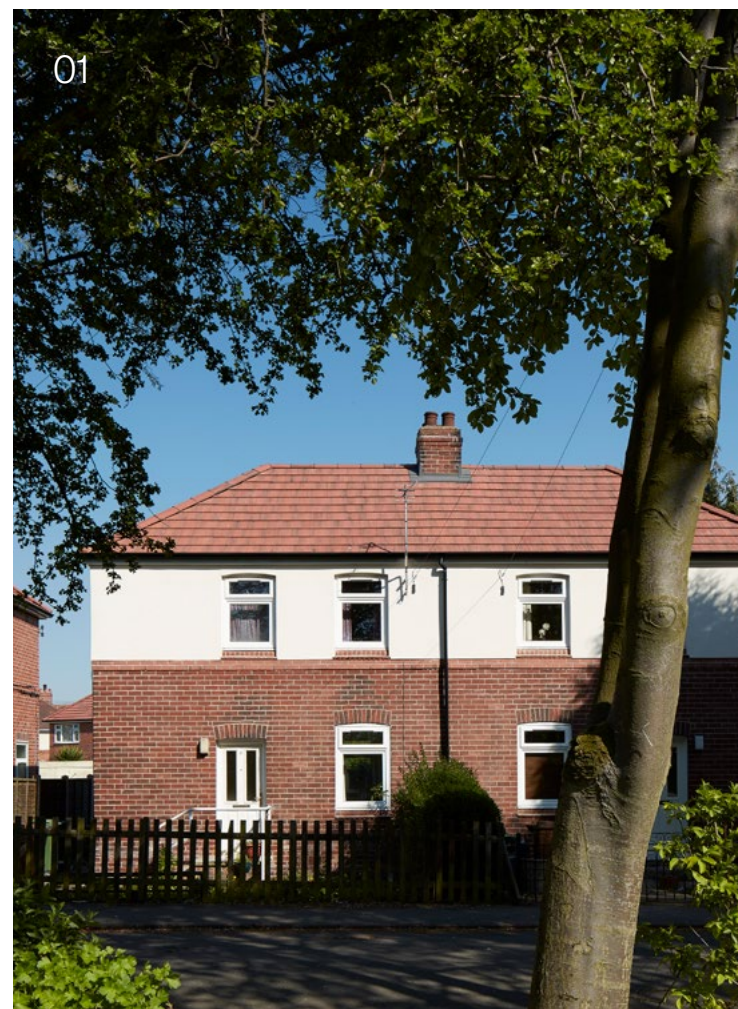
### Northern Rail - New Car Parks

Commissioned by Northern Rail to undertake feasibility studies and detailed designs as lead designer of a multidisciplinary team on new car parks at Normanton, Shipley, Hebden Bridge, Menston and Steeton and Silsden.



## Residential

Refurbishment and Remodelling  
Repair and Maintenance  
Window and Door Replacement  
Accessibility Adaptations  
Independent Living  
Communal Spaces  
Assisted Living  
Housing Associations  
Local Authorities  
Retirement  
New Build  
Employer's Agent  
Carbon Reduction and Retrofit  
Fire Improvement  
High Rise Refurbishment



### WDH Framework, Yorkshire

We are currently delivering a significant number of schemes as part of a major framework for WDH. This single source three-year framework includes two distinct lots: a £20 million per annum capital works framework and a £6 million per annum Independent Living Schemes (ILS) programme. (01)

### Calderdale Council – Beech Hill Group Repair Scheme

We are multi-disciplinary lead on Beech Hill (Phase 2) area consisting of 70 mixed tenure low rise dwellings that were constructed in 1971. The project is to comprehensively refurbish and improve the external fabric and envelope of the houses and areas of associated hard landscaping to create low maintenance dwellings that also respond to the Climate Emergency with increased thermal performance and where possible utilise renewable technologies.

### Habinteg - The Bristol

Under a longstanding relationship with Habinteg Housing Association, we were appointed to convert the existing communal area and flats into new, improved apartments.

### WDH - Chiltern Court, New Build

Under our ongoing framework, we were appointed to undertake the role of employer's agent for a new-build housing scheme in Ackworth, Wakefield. The scheme provided 16 new semi-detached dwellings.

### Matthew Street Apartments, Swansea

Commissioned by Interserve to carry out geomatic services and a condition survey of these multi-storey council-owned apartment blocks. Our geomatic consultancy team provided a laser scan and utility mapping services. The subsequent project included planned maintenance and uplift work involving recladding the building, renovating communal areas and refurbishing bathrooms and kitchens. (02)

### Firstport Retirement Property Services, Across the UK

We have had a working partnership with FirstPort Retirement Property services for many years for the delivery of professional services across England and Wales. We deliver a wide range of annual planned and reactive maintenance works across their portfolio of retirement home sites. We manage £4m to £6m of work across approximately 600 projects each year. (03)

### Lewisham Homes - Sheltered Accommodation Surveys/ Refurbishment, London

Commissioned as part of a team to deliver Lewisham Homes' Sheltered Housing Investment and Improvement Programme. Our appointment included undertaking detailed condition surveys, the development of options and designs for proposed improvement works, and the subsequent project delivery to provide accommodation to Decent Homes standards.

### WDH - Lift Replacement Programme

We are providing design, project management services, principal designer and client advisor duties for a major programme of lift replacements across high rise tower blocks in Wakefield city centre. Before design commenced, our geomatic consultancy team initially used terrestrial laser scanners to survey the blocks, assessing the structural cores of the lifts, stairs and external envelope.

### WDH - Airedale Carbon Reduction Retrofit Scheme

We have been commissioned for this scheme to trial a range of innovative approaches to energy retrofit across WDH-owned social rented properties in Airedale, Castleford, to reduce carbon emissions and inform future efforts to reduce emissions.

- 01 WDH Framework, Yorkshire
- 02 Matthew Street Apartments, Swansea
- 03 Firstport Retirement Property Services - Belvedere Court
- 04 Wolverhampton Homes - Heath Town Estate



## Schools and Academies

CIF and Capital Funding Support  
Support for Growing Academy Trusts  
Condition Surveys  
Roofing Works  
Extensions  
Refurbishments  
Entrances and Remodelling  
Boiler Replacement  
Accessibility  
Development Plans  
Sports Facilities  
Modular Solutions  
Block Replacements  
Heating and Electrical Upgrades  
SEN Schools

- 01 Harris Federation, London  
02 King David High School Girls' Yavneh Block  
03 Kirkby High School, Liverpool  
04 Kilnhurst Primary School, Rotherham  
05 John Bentley Academy, Wiltshire



### Star Academies

We work across the trust's expanding national network of primary and secondary schools to provide strategic advice across their estate including due diligence surveys for academies that have recently joined the trust. Following the development of a five-year strategy, we have been involved in design and delivery of a range of subsequent works.

### Herefordshire Council Planned Maintenance Programme

We have been commissioned to lead a multidisciplinary team to plan, co-ordinate and manage the delivery of the two-year planned maintenance programme for the council's community and local authority maintained schools.

### Rowan Learning Trust, Kirkby High School, Liverpool

We were appointed for this project which involved the replacement of all roof and wall cladding to the sports hall at Kirkby High School in Liverpool. Works involved refurbishing the internal sports hall and circulation area with new ceilings, decorations, lighting and seating. The external lighting was also replaced as part of this scheme. (03)

### King David High School, Girls' Yavneh Block

We were commissioned to this project to provide a range of building consultancy services including design, contract administration, the principal designer role and geomatic consultancy, leading a multidisciplinary team to provide a new three-storey extension and to refurbish a historic building. The new block provides modern orthodox Jewish education at secondary level. (02)

### Kilnhurst Primary School Flood Reinstatement

Following a major flood, White Woods Primary Academy Trust appointed us for the design and contract administration of the £2.5m flood repair works. We acted as lead consultant as part of a multidisciplinary team. (04)

### Outwood Grange Academies Trust

We provided professional property support involving the development of strategic project plans across the trust's estate. For academies that have recently joined the trust, we have undertaken the required surveys and appraisals in order to assist with the re-brokerage from existing responsible bodies where relevant. We have subsequently delivered projects including remodelling, refurbishment, extensions and feasibility studies.

### The Harris Federation, London

We have worked with the Harris Federation in various capacities since 2013. Our experience includes a range of services, including support in funding bids, measured and condition surveys, feasibility studies, planning applications, conservation area consent and the full multidisciplinary services required in the delivery of maintenance, refurbishment, remodelling and extensions of existing buildings. (01)

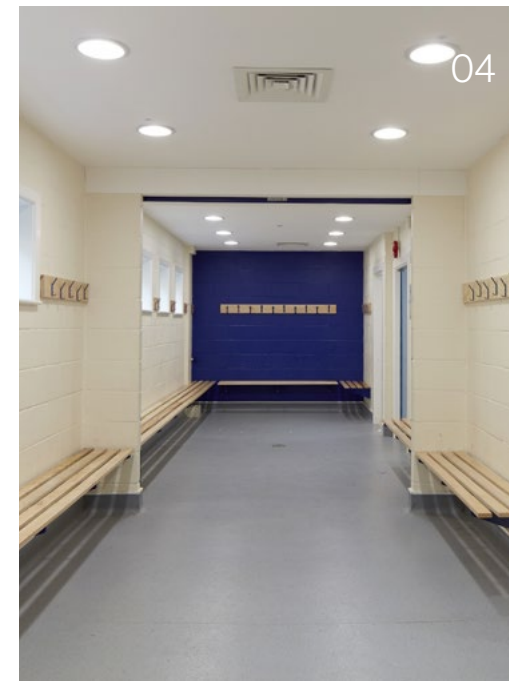
### John Bentley Academy, Wiltshire

We provided a new modular classroom block for students who are on an Alternative and Flexible (A&F) curriculum due to behavioural, social, emotional and mental health barriers. We acted as principal designer, contract administrator and project managers to deliver this new build scheme. (05)



## Colleges

Colleges and Sixth Form  
Classrooms  
Teaching Spaces  
Offices  
Sports Facilities  
Arts and Performance Spaces  
Accessibility  
Extensions  
Refurbishment and Remodelling  
Entrances and Receptions  
Condition Surveys  
T-Level Capital Funded Projects  
FECTF Funded Projects



- 01 Huddersfield New College, New Science Block  
02 Huddersfield New College, Costa Café  
03 Huddersfield New College, Sports Barn  
04 All Hallows Catholic, College, Macclesfield

### Huddersfield New College - Costa Café

We were appointed to create a revamped and expanded Costa café which involved the creation of a new mezzanine area. A dormer was installed to ensure sufficient head height for the mezzanine. We also installed large new windows to the ground floor to benefit from fantastic views across the Colne Valley, creating an attractive environment for students and staff to meet and socialise. (02)

### All Hallows Catholic College, Macclesfield

After a successful bid for funding (CIF), we carried out the creation of new changing rooms as lead consultant and principal designer. The works included the creation of four new changing facilities for players and officials, and wheelchair accessible toilets and office. (04)

### Huddersfield New College - Library

We were appointed to design and project manage the reconfiguration of the library to create a 'one stop shop' for a variety of student services, including counselling and advice facilities, careers and study centre.

### Manchester College - Performing Arts Facilities

Extensive remodelling to change the use of the current IT suite and refurbish the interior for use as a new performing arts facility. We undertook a range of roles on this scheme, including procurement management, health and safety, principal designer and the preparation of work packages.

### King George V College, Southport

Internal alterations to existing rooms within the media studies block to create a new classroom, offices, filming room and editing room. External alterations were delivered to create a new fire escape and new windows were installed.

### Shelley College, Huddersfield

We refurbished and remodelled the existing school building and created a 400m<sup>2</sup> extension. The College wanted to create an assembly hall large enough for each year group and a sufficiently sized dining room. Other projects, some of which were CIF funded, included the relocation of the art and biology departments, remodelling of the front entrance and new roof coverings, fascias, soffits and rainwater goods.

### Notre Dame 6th Form College, Leeds

We were novated to construct a new 16-class teaching block and technology workshops. The building replaced the existing accommodation within a Victorian building on the campus, which was demolished at a later phase. We have subsequently delivered a new £462k two-storey modular teaching block comprising four classrooms, each able to accommodate up to 30 pupils, funded through the government's T-Level Capital Fund.

### Huddersfield New College - Sports Barn

The design and construction of a new tensile fabric sports building. The college wanted to expand its sporting capacity to enable them to offer additional courses and to become a Netball Academy. We undertook the duties of project manager, contract administrator and principal designer. We relevelled the existing site to construct a tensile sports structure to provide all weather facilities for traditionally 'outdoor-based' sports. (03)

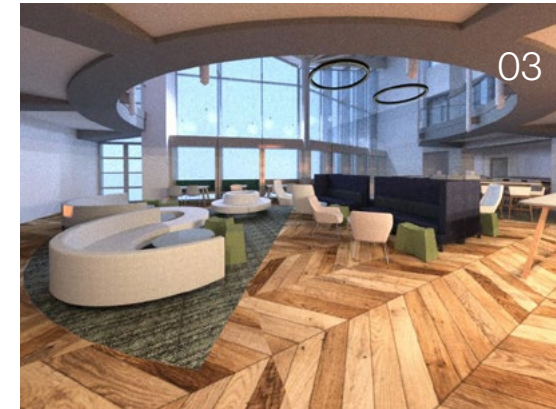
### St Luke's Education Centre, Bradford

The completion of a full inspection of the fabric, structure and services of this large inter-war former nurses' home and college prior to acquisition in order to schedule its condition and identify all future maintenance liabilities. A full health and safety audit was also undertaken to assess the client's present and future liabilities under relevant legislation.



## Universities

Repair and Maintenance  
Teaching Spaces  
Laboratories  
Office and Study Space  
Extensions  
Refurbishment and Remodelling  
Estate Development  
Sports Facilities  
Dining and Retail Facilities  
Libraries  
Conference Centres  
Lecture Theatres  
Condition Surveys



### **Sovereign Design House, University of Huddersfield**

We were initially commissioned to undertake a pre-acquisition survey of the building fabric. The former Bath House, which is an amenity block on the Thomas Broadbent and Sons site, was in a poor state of repair, and the subsequent refurbishment project included the replacement of roof coverings, internal finishes, fixtures, fittings and concrete repairs to create a new art gallery and cafe. (01)

### **East Midlands Conference Centre, University of Nottingham**

Through our framework with the University of Nottingham, we were commissioned to provide design, project management/contract administration and principal designer services for the refurbishment scheme of the East Midlands Conference Centre. The scheme sought to upgrade the facilities, providing high-quality, modern conference, event and exhibition spaces. (03)

### **39-47 Gordon Square, Birkbeck, University of London**

The project comprises the wholesale once in 30 years refurbishment of the 39-47 Gordon Square. The scope includes reconfiguration works to create an inspirational teaching and learning facility for the Schools of Art and Law. The property is Grade II listed, with previous notable residents having included Virginia Wolf and Vanessa Bell. (04)

### **University of Leeds - Central Teaching Spaces**

We managed year-by-year programme to completely refurbish and uplift the majority of the University's 300 lecture theatres across the campus. The theatres are spread throughout many of the University's 500 diverse and wide ranging buildings, from Grade II listed structures through to modern facilities.

### **UKRRIN, University of Huddersfield**

We were commissioned as lead consultant, architect, project manager and principal designer to oversee a multidisciplinary team providing project management, architecture, building services engineering, structural engineering, acoustic and fire engineering services to develop the Rolling Stock Innovation Centre at the University of Huddersfield, funded by the UK Rail, Research and Innovation Network (UKRRIN). (02)

### **Kingston University Framework**

We have been awarded a place on Kingston University's Estates Consultancy Framework and have delivered building repairs across a number of the university's buildings.

### **University of Manchester - Mansfield Cooper and Sam Alex Buildings**

We delivered the refurbishment works to both the Mansfield Cooper and Sam Alex buildings within the campus. We also completed damp investigation works at the Sam Alex site and WC refurbishments to other sites on campus.

### **University of Exeter - Teaching and Learning Spaces Upgrade**

We provided extensive upgrade works to various teaching and learning spaces on the University of Exeter campus. The scope included works to the lecture theatres, treatment rooms and upgraded AV systems.

### **Laura Annie Willson Building, University of Huddersfield**

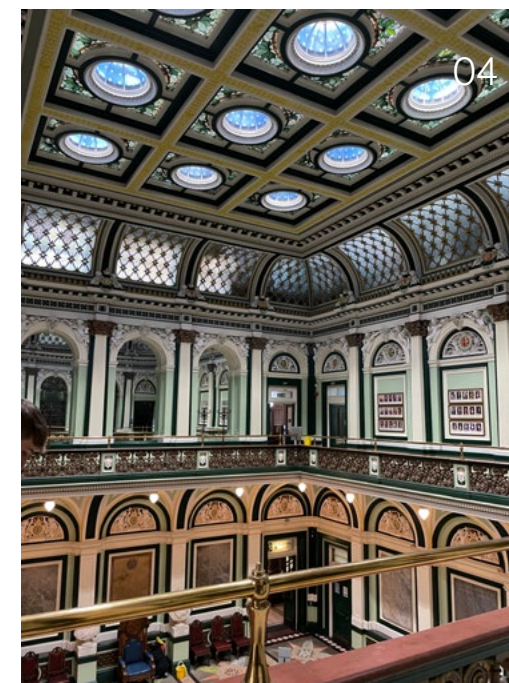
We recently completed the refurbishment and renovation of the former Technology Building for the School of Computing and Engineering. The building provides state-of-the-art facilities for scientists and engineers researching areas ranging from digital manufacturing, virtual reality, and the internet of things, to digital forensics, fluid sciences, and electric vehicles.

- 01 Sovereign Design House, University of Huddersfield  
02 UKRRIN, University of Huddersfield  
03 Conference Centre, University of Nottingham  
04 39-47 Gordon Square, Birkbeck, University of London  
05 University of West England, Refurbishment  
06 Laura Annie Willson Building, University of Huddersfield



## Civic and Community

Conservation and Heritage  
Offices  
Fire and Rescue  
Sports and Leisure  
Local Authorities  
Justice and Defence  
Accessibility  
Feasibility Studies  
Refurbishment and Remodelling  
Decarbonisation  
Retrofit



- 01 Kirklees Council Framework, Huddersfield Library  
02 Calderdale Council, Elland Library  
03 Kirklees Council Framework, Estates Building  
04 Calderdale Council, Halifax Town Hall  
05 Ministry of Justice NOMS Strategic Alliance

### Kirklees Council - Framework

We have held a framework commission with Kirklees Council since 2001. Over this period of time, a significant number of projects have been undertaken across a wide variety of public and civic buildings covering the full spectrum of building consultancy and building surveying services. We have worked with Kirklees Council since 1971 on hundreds of projects and over the years has developed a very close working relationship. (01, 03)

### Ministry of Justice NOMS Strategic Alliance

We have worked on projects under the National Offender Management Service (NOMS) Strategic Alliance since 2002. Since that date we have been involved in more than 280 projects or sub-projects. The approximate values fall within a range that has been between £500k and £180m. (05)

### North Lincolnshire Council

We have been appointed for several terms of the four-year framework agreement to provide building surveying, architectural, and principal designer services to this local authority.

### Calderdale Council

We have an ongoing relationship with the client and have been appointed to the council's framework for several years. Works have included school refurbishment, occupancy studies in offices and the development of public transport infrastructure. (02,04)

### Harrow Council

We were appointed to Harrow Council's Professional Services Framework for services including principal designer, building surveying, asset management, property, and associated services. Recent projects include a new cafe, nursery and conversion of vacant caretakers house.

### Halton Borough Council Framework

We provide principal designer services for the council's ongoing maintenance and refurbishment of their building stock as part of a framework. Projects generally involve working in live operational environments, such as housing, public buildings, schools, sports facilities and offices.

### Equans HMCTS Framework, Nationwide

Our building consultancy team is providing principal designer services as Equans' preferred supplier on the national HMCTS (Her Majesty's Courts and Tribunal Service) Framework. The framework covers 367 properties relating to the courts and tribunal services across the UK. We provide services for a range of refurbishment and improvement works, including general refurbishment and reconfigurations. Our team also provides wider building consultancy services on an ad-hoc basis, including condition surveys and feasibility studies.

### High Peak Council

We have been appointed to High Peak Council's framework which includes design services, the principal designer role and the management of schemes through to completion. We have carried out projects including the refurbishment of Glossop Market Hall and Municipal Buildings, alterations to the listed Victoria Hall, and roof inspections.

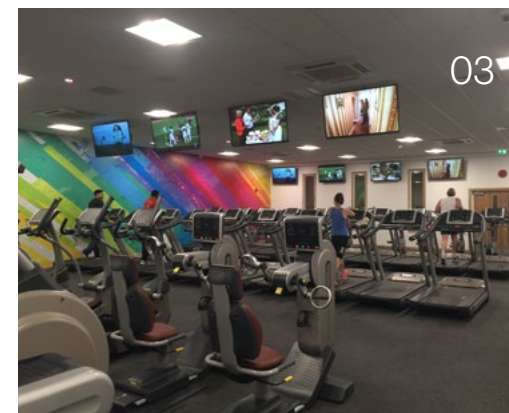
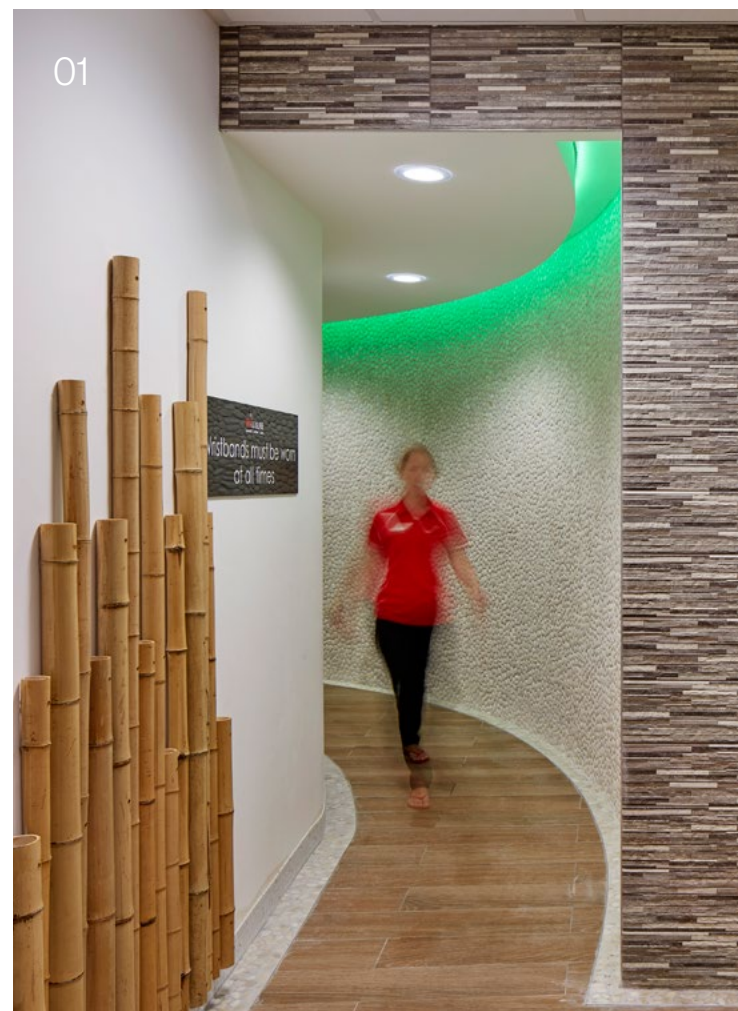
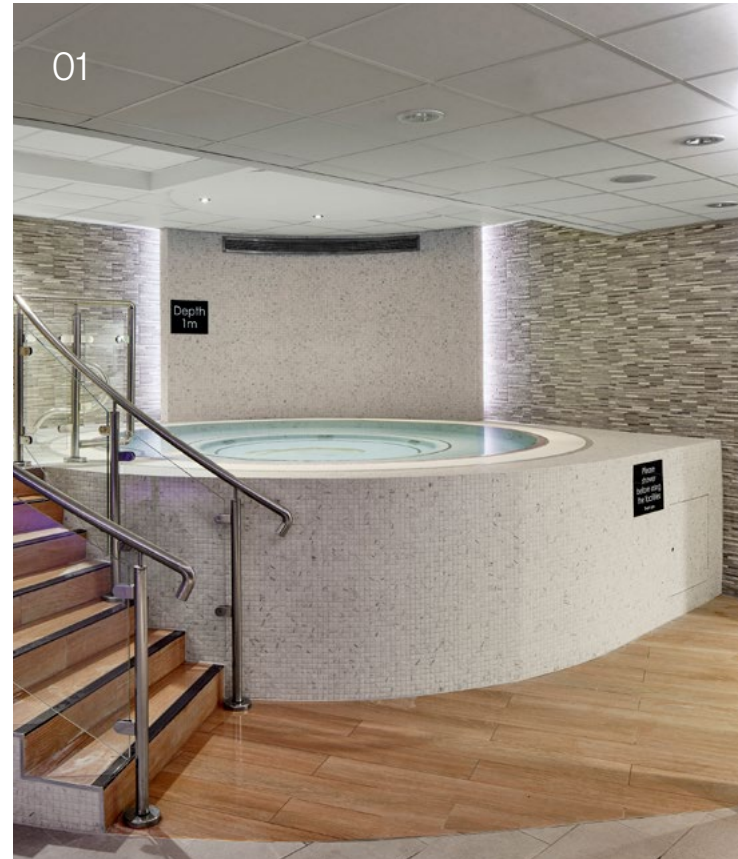
### Herefordshire Council

We led a multidisciplinary team to plan, co-ordinate and manage the delivery of a two-year planned maintenance programme across the council's schools.



## Sports, Leisure and Hospitality

Specialist Sports Facilities  
Repair and Maintenance  
Principal Designer  
Lottery Sports Fund  
Refurbishment and Remodelling  
Sports Pitches  
School Sports Facilities  
Leisure Centres  
Spa Facilities



### Stockport Council - Grand Central Baths

We have worked on several projects across the council's leisure portfolio, including a £1.3m spa development and pool refurbishment at Grand Central Baths. We have also undertaken health & safety works at six leisure centres in the area, with a value of £1.2m. (01)

### Huddersfield Sports Centre - Creation of Budget Gym

We were commissioned by Kirklees Active Leisure (part of Kirklees Council) to carry out refurbishments and improvements to Huddersfield Sports Centre. The scope of the works comprised cost effective remodelling of the ground floor to create a budget gym. The building remained in use to minimise impact on cash flow. (02)

### Ludlow Town Football Club

We undertook a full building survey of the existing stadium buildings to advise on their current condition as part of a proposed purchase. The survey included all building elements both internally and externally and all mechanical and electrical installations.

### Holmfirth Pool Refurbishment Works

Appointed to carry out refurbishment works at Holmfirth Pool. The work comprised general refurbishment and uplifts works to the pool hall, a new store room and refurbished changing rooms. We installed a new ceiling in the pool hall and created a new store room on the side of the building. The changing rooms were refurbished, including new fixtures, fittings, showers, flooring and walls.

### Kirkby High School - Sports Centre

We were appointed to complete the replacement of all roof and wall cladding to the sports hall at Kirkby High School in Liverpool. Works involved refurbishing the internal sports hall and circulation area with new ceilings, decorations, lighting and seating. The external lighting was also replaced as part of this scheme. (04)

### Batley Sports and Tennis Centre

We were appointed under the framework contract to act as lead consultant and designer for this major remodelling scheme. The scheme funded by the client, with an element of grant funding from Sport England. The grant funding was allocated to improve the swimming facilities at the site whilst the council funded the remodelling and upgrade of the remaining facilities. (03)

### Criterion Theatre

The Criterion Theatre is a West End theatre situated on Piccadilly Circus in the City of Westminster. It is an underground Victorian building which has been listed as Grade II\*, we provided consultancy services to identify the source of water ingress, which over many years has damaged plaster and is forcing tiles off the wall and to develop proposals to rectify and subsequently arrange for suitably qualified and experienced contractors to carry out the necessary repairs.

### Kings Hall Leisure Centre, Hackney

From a semi-derelict building, we converted the premises to form a communal changing village, two swimming pools, vapour steam suite, indoor sports hall, and spa bath. Throughout the development, the design team sought to respect the character of the building whilst enhancing the existing facilities and ensuring that various elements of the scheme were linked in order to achieve optimum flexibility in use.

### Stockport Council/Life Leisure - Romiley Leisure Centre

This refurbishment project involved the existing swimming pool changing rooms, converting the separate male and female changing rooms into a changing village. The project created cubicles for single, double, family users, and users with accessibility needs, alongside toilets and lockers. We also made a range of improvements to the reception aimed at enhancing the customer experience.

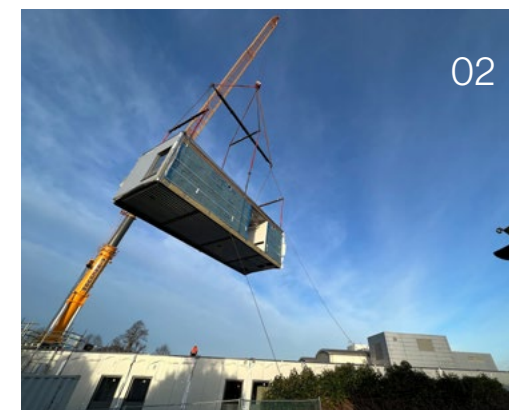
- 01 Stockport Council - Grand Central Baths
- 02 Huddersfield Sports Centre
- 03 Batley Sports and Tennis Centre
- 04 Kirkby High School - Sports Centre
- 05 Dewsbury Sports Centre



## Healthcare

Ward Relocation  
Specialist Equipment  
Estate Development  
Refurbishment and Remodelling  
Repair and Maintenance  
Sustainability  
Condition Surveys  
Feasibility Studies  
Conservation  
Backlog Maintenance

01 Ladybridge Hall and Lodge  
02 Darent Valley Hospital  
03 Birmingham Treatment Centre



### Callington Road Hospital, Bristol - Elizabeth Casson House PICU

We were commissioned to improve the layout of the existing Elizabeth Casson House Psychiatric Intensive Care Unit (PICU) to resolve issues around safeguarding, ligature risk, visibility, and visitor and service user access. We carried out non-obtrusive surveys, full measured internal surveys and produced a BIM model to ensure coordination and accuracy.

### Birmingham Treatment Centre - Endoscopy Facility

Following the completion of an earlier scheme to refurbish the fracture clinic at the Birmingham Treatment Centre, we were appointed to deliver this scheme within the endoscopy facility. The facility was utilised at 95% capacity and required additional space to ensure the Trust can meet the 'Day 28' cancer diagnosis standard where patients should have cancer ruled out or diagnosed within 28 days of referral. (03)

### Royal Gwent Hospital

We have undertaken a condition assessment of all the main buildings at the hospital. Included were the five main buildings housing the Orthopaedic, Antenatal, and General Wards, together with Intensive Care, A&E and the Operating Theatres. The inspections included all internal and external elements of the buildings. Reports were collated to indicate conditional ratings against established NHS criteria, to advise on condition and anticipated lifespan in order to establish future maintenance and repair liability.

### St James University Hospital - Lincoln Wing A Block

We carried out historic building repairs to this Grade II listed building. Works have included refurbishment of the external façade of the brickwork, as well as re-pointing, and also repairs to stone copings and stone pierced parapets.

### Darent Valley Hospital

We were appointed by Imagile to remodel facilities on several floors of Darent Valley Hospital, an acute district general hospital in Kent which is run by the Dartford and Gravesham NHS Trust. The scope involves the careful phased relocation of hospital staff. Our role included design, acting as lead consultant, undertaking measured surveys and leading a team including structural and M&E engineers, managing the scheme through to successful completion. (02)

### North West Ambulance Service NHS Trust - Ladybridge Hall and The Lodge

We were appointed to provide feasibility, design, contract administration, principal designer and geomatics services on two buildings as part of the NHS Shared Services Framework. We completed the internal redecoration and remodelling of training and meeting rooms to create offices for the executive team and administration teams. We also carried out environmental refurbishment and remodelling works to The Lodge, a 1980s two-storey mansory, which included replacing the old metal windows with new double glazed UPVC. (01)

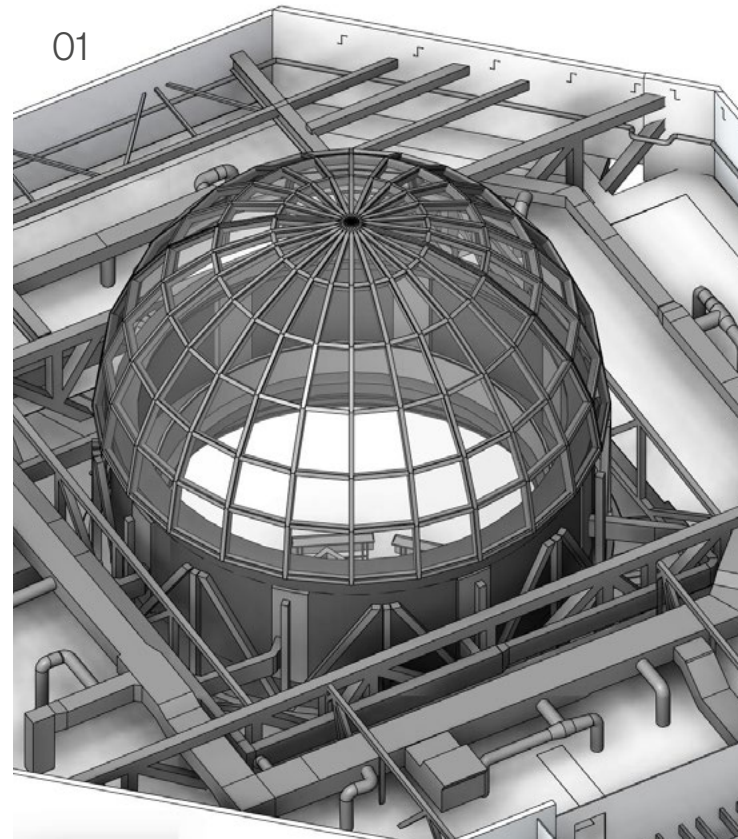
### Leeds General Infirmary - Ward Relocation/refurbishment

We produced proposals for the relocation of the Breast Care Unit at Leeds General Infirmary. The scheme involved the renewal of finishes to the ward together with the creation of new en-suite bathrooms and alterations to staff areas. Close liaison with the hospital staff and voluntary end user groups ensured that their requirements were fully achieved.



## Retail

Dilapidation  
Schedules of Condition  
Contract Administration  
Project Management  
Reconfiguration  
Measured Surveys  
Portfolio Management  
Repair and Maintenance  
Internal And External Decorations  
Remodelling



01 Meadowhall Shopping Centre - Scan to BIM  
02 Huddersfield New College - Costa Café  
03 Giraffe Restaurants, London and Manchester  
04 Tobacco Dock, London

### Huddersfield New College - Costa Café

We created a revamped and expanded Costa café which involved the creation of a new mezzanine area. A dormer was installed to ensure sufficient head height for the mezzanine. We also installed large new windows to the ground floor to benefit from fantastic views across the Colne Valley, creating an attractive environment for students and staff to meet and socialise. (02)

### Giraffe Restaurants, London and Manchester

We were appointed as project managers for the installation of two new Giraffe restaurants at Heathrow and Manchester Airports as part a drive to extend the chain into the airport environment. (03)

### Tobacco Dock, London

We were appointed by Bisley Properties as contract administrator for reconfiguration works to four retail units in this Grade I listed former warehouse building. These units were enlarged by the removal of walls and partitions. (04)

### Leeds Road Retail Park

We provided design and project management services for the subdivision of a retail unit to create two new units, which were brought up to an FRI condition ready to receive tenant's fit-out. We also provided Health & Safety services, including the principal designer role.

### Kmart, Australia

Our geomatic consultancy team was commissioned to create detailed 3D Revit models of Kmart stores in Australia. Point cloud data from a number of stores were sent to our team so that we could create comprehensive 3D models, which included fine details such as lighting and shelving units. The completed models enabled the client to plan for the refitting and remodelling of the stores, as well as for the provision of new signage.

### The Restaurant Group, Nationwide

We have worked for The Restaurant Group on a wide variety of projects across the UK, ranging from roll out new build programmes for Frankie & Benny's, Chiquitos and other restaurant chains, through to alterations, improvements and reactive maintenance work at sensitive operational sites.

### Huddersfield Shopping Piazza

The remodelling of this dated open-air 1960's shopping centre involved the creation of a range of tensile fabric canopies and walkways to extend the dry areas for public access. The project also included widespread concrete repairs, hard landscaping, reroofing and improved landmark signage.

### National Amusements

We delivered a programme of highly comprehensive due diligence surveys to National Amusements' portfolio of Showcase Cinemas throughout the UK. The survey programme involved more than 25 cinemas, and included fabric and services elements, desktop environmental audits, provision of EPCs, reinstatement valuations and boundary checks.

### Ravensthorpe Street Scene - Regeneration of Retail Units

Working with Kirklees Council and Bermar Building Company, we developed proposals to regenerate 90 privately owned shop units along a 1.5 mile stretch. Initial detailed condition surveys were undertaken to each of the shop units highlighting works required to upgrade shop frontages. We were then appointed to manage the repair and restoration of the external fabric.

### Gap, Nationwide

Measured surveys to Gap stores as part of their new build and refurbishment programmes. In total, our geomatic consultancy team conducted measured surveys for Gap at 27 locations.



# Imaginative and pragmatic in equal measures

Offering multiple architecture and building consultancy services gives us a complete understanding of the full lifecycle of the built environment.



## Architecture

Our architects are passionate about creating beautiful sustainable places, that function brilliantly for the people who use them, across the UK and internationally. We expertly manage projects, across a range of sectors, from concept to completion, while making the design process as inclusive as possible – engaging with all stakeholders to ensure everyone's voice is heard throughout.

## Building Consultancy

Our building consultancy team is driven by seeing the positive impact of our work. With skills and expertise that cover the full range of the built environment, from advising on new buildings to refurbishing existing spaces, we offer a comprehensive set of specialist services. We embrace innovative tools and technologies that allow us to find inventive ways to assess and reimagine all kinds of sites and structures.

## Building Surveying

Our team of building surveyors are dedicated to helping clients protect, care for and manage their properties long-term. We provide a full range of services designed to minimise potential challenges and keep projects on track. We identify any issues and find opportunities for improvement. Providing in-depth reports and clear advice that always comply with all the latest regulations.

## Conservation and Heritage

Our specialist conservation and heritage team is passionate about giving new life to the places and spaces forged in the past – making them relevant and functional for today. We identify whether existing infrastructure still has a role to play and prioritise restoration making them fit-for-purpose wherever possible – all the while remaining sensitive to the original design features.

## Design and Contract Management

Our teams of chartered building surveyors have the expertise to providing a range of specialist services that include the protection, management and development of individual properties and whole estates. We work across all building types, old and new, including extensions, maintenance and repairs, remodelling, conservation, building works and refurbishments.

## Geomatic Consultancy

With pinpoint accuracy and meticulous attention to quality, our geomatic consultancy team embrace the latest tools to produce immersive experiences for our clients. They can use the data to provide intelligent, cost-effective facilities management and inform maintenance strategies. The collection of spatial statistics and geographical information helps us inform the most appropriate solutions bespoke to each project.

## Interior Design

Our interior designers create beautifully imagined, highly functional spaces that enhance people's experience and considers everyone's health and wellbeing at every turn. Our fully integrated design approach includes fit-out, refurbishment, space analysis and planning, workplace strategies, wayfinding, FF&E (Furniture, Fixtures and Equipment) and bespoke furniture design.

## Landscape Design

We consider outdoor spaces as an essential part of meaningful placemaking. Our landscape architects deliver solutions that help to define the character of a space and beautifully integrate with the surrounding architecture, to enhance day-to-day life. We foster greater connections between people and nature and understand the wider benefits of this in promoting environmental sustainability.

## Masterplanning

Our masterplans shape the delivery of dynamic and inspiring places that embrace the ever-changing ways we live, work, socialise and travel. With the consideration of the unique context of a place and through engaging with the local community, we devise bespoke masterplans from suburban neighbourhoods to strategic regeneration schemes, residential-led developments to mixed-use projects.

## Principal Designer and CDM Advisor

Acting as principal designers under updated CDM (Construction, Design and Management) regulations, we fully integrate health and safety throughout the design and construction process. Our aim is to not only make sure that all legislation is met but to add value to every project. With clients benefiting from our vast practical expertise in design, occupational safety, construction safety, risk assessment and end-user documentation.

## Property and Asset Management

Our property and asset management team take a holistic approach, drawing on our multidisciplinary and cross-sector expertise to offer a comprehensive range of proactive management and consultancy services including strategic advice, asset management, portfolio maintenance management and BIM FM.



# Appointing us is simple

Our position with a number of established frameworks enables easier, quicker and cheaper procurement routes for our clients.

The utilisation of public sector frameworks allows access to all our services through efficient compliant routes, without the need for costly tendering processes.



## **ProcurePublic Building Consultancy Services Framework**

This framework can be used by any Public Sector body throughout the UK. We can be appointed directly or via mini competition for the duration of this framework, which runs for four years and commenced in July 2023. We can be appointed via Lot 3 Decarbonisation and Retrofit Advisors, Lot 4 Contract Administrator and Project Managers, Lot 5 Architect and Landscape Architect, and Lot 7 Principal Designer.

## **Procure Partnerships Framework**

Open to all public sector bodies across the UK, with no fee to access the framework. We can be appointed for architectural services across all eleven regions throughout England and Wales, as well as for building surveying services across North West, Yorkshire, South East and South West.

## **YORconsult2**

We are appointed on the architectural, multidisciplinary and building surveying lots for this framework. We have been through a rigorous tender process, using a combination of price and quality measures. YORconsult2 provides a vehicle for any public-sector organisation, to procure professional services for construction projects across the North East of England, Yorkshire, Lincolnshire, Nottinghamshire and Derbyshire.

## **EN:Procure Consultancy Services Framework**

A public sector framework allowing direct appointment of multidisciplinary, building surveying, architectural, principal designer and employer's agent services. We can be appointed in the Yorkshire and Humberside and North West regions either through further competition or direct award.

## **Pagabo Professional Services in Construction and Premises Framework**

A simple, flexible and fully compliant framework open to all organisations from across the public sector to private sector businesses, looking to procure consultants for a construction or development project. We are appointed to Lot 5 building surveying services in the South East region.

## **LHC / CPC MDC1 – Multi-Disciplinary Consultancy Services Framework**

This framework was developed to provide an efficient, value for money procurement route for local authorities, registered social landlords, councils, boards, trusts, and other public sector bodies seeking a comprehensive range of high-quality consultancy services across multiple disciplines. We are appointed for building surveying, principal designer and project manager services in the North and Midlands. In London and the South East region, we are appointed as project managers.



# Providing our clients with quality assurance

We are fully accredited and are also pre-qualified on the leading supplier assessment platforms across the sectors in which we work. In addition we have accreditations and systems in place for the training, development and management of our people.

Our systems are designed to meet the relevant needs and expectations of the interested parties with whom we interact, and where these form a legal requirement, our management systems include identifying, applying and monitoring these requirements for compliancy.



## AHR Systems

Our systems are certified by the British Standards Institute as being compliant with:

- ISO 9001 - Quality Management
- ISO 14001 - Environmental Management
- BS 1192 - BIM Level 2

We follow the principles of ISO 45001 for Occupational Health and Safety. They also promote best practice design processes that are aligned to the Construction (Design and Management) Regulations 2015.

## RICS (Royal Institution of Chartered Surveyors)

We are regulated by RICS, the world's leading professional body for standards and qualifications in property, land, construction and infrastructure. This means that we have agreed to work to globally recognised ethical and professional standards. RICS produces extensive guidance, regulation and codes of practice, and membership is internationally regarded. RICS membership also requires CPD (Continuing Professional Development) which means that our teams are always up to date with the latest knowledge.

## Constructionline (Gold Standard)

We are members of Constructionline, a supplier assessment service highly respected within the construction industry and which is aligned to the PAS 91 pre-qualification process. Buyers procuring our services through Constructionline are assured of our benchmarked service standards, and procuring through Constructionline also streamlines the process.

## CHAS (Contractors' Health and Safety Scheme)

CHAS is an assessment scheme, in this case focused on health and safety. CHAS members can demonstrate an integrated approach to dealing with health and safety that avoids undergoing separate assessments for each project, again providing convenience and peace of mind.

## RISQS

### (Railway Industry Supplier Qualification Scheme)

RISQS is the sole entry-point to supplying the rail industry and qualifies us to supply our core services to industry leaders, including Network Rail, Transport for London and regional and national Train Operating Companies. In particular, it verifies our competency to undertake works in higher-risk areas of rail infrastructure.

## CIRAS

### (Confidential Incident Reporting and Analysis System)

CIRAS works hand-in-hand with our RISQS verification to give us access to a confidential incident reporting service.

## Praxis

Praxis provides us with 24/7 access to OH and S (Occupational Health and Safety) training and guidance for our staff. We use Praxis training modules to annually inform our staff and to assess their knowledge of a wide range of OH and S subject matter.

## TSA (The Survey Association)

We are proud members of the TSA, formed in 1979 to promote best practice. The TSA provides a forum for members for discussion, debate and to continue professional development. The TSA meets regularly with RICS and the Chartered Institution of Civil Engineering Surveyors (ICES), a professional association in the field of civil engineering surveying on a range of issues and has established a group called the SLG (Survey Liaison Group).

## APS (Association for Project Safety)

APS are a leading professional institution in the field of construction health and safety management. Our registered members are recognised as promoting and practicing good health and safety risk management through design controls in the construction industry and enables our teams to act as Principal Designers and CDM advisors to our clients. APS play a leading role in helping the construction industry meeting the challenges of implementing CDM Regulations effectively and proportionately. The APS membership also requires CPD, which means that our CDM teams are always up to date with the latest knowledge.

## Cyber Essentials Plus

An essential accreditation that we are required to hold to undertake government work and is part of the UK Government's overall National Cyber Security Strategy to make businesses more secure against cyber-attacks.



# Helping your project make a positive impact



**Allan Hunt**  
Managing Director  
BSc MRICS

allan.hunt@ahr.co.uk



**Samantha Smith**  
Director  
BSc (Hons) FRICS

samantha.smith@ahr.co.uk



**Andrew France**  
Director  
BSc (Hons) MRICS

andrew.france@ahr.co.uk



**Tom Murphy**  
Director  
BSc (Hons) MRICS MAPM

tom.murphy@ahr.co.uk



**James Wilkinson**  
Director  
BSc (Hons) MRICS IMaPS

james.wilkinson@ahr.co.uk



**Mark Stead**  
Director  
BSc (Hons) MRICS

mark.stead@ahr.co.uk



**Stephen Bottom**  
Director  
MRICS IMaPS

stephen.bottom@ahr.co.uk



**Lee McDougall**  
Director  
AM CICES

lee.mcdougall@ahr.co.uk



**Katrin Dietrich**  
Director  
Dipl.-Ing. MArch

katrin.dietrich@ahr.co.uk



**Jonathan Thacker**  
Business Development Director  
BA (Hons) DipM

jonathan.thacker@ahr.co.uk

# Working across nine UK offices



## Birmingham

Alpha Works  
Alpha Tower  
Suffolk Street Queensway  
Birmingham B1 1TT  
T 0121 456 1591

## Bristol

Vintry Building  
Wine Street  
Bristol BS1 2BD  
T 0117 929 9146

## Cardiff

Brunel House  
Fitzalan Road  
Cardiff CF24 0EB  
T 02922 930 890

## Glasgow

Savoy Tower  
77 Renfrew Street  
Glasgow G2 3BZ  
T 0141 225 0555

## Huddersfield

Norwich Union House  
High Street  
Huddersfield HD1 2LR  
T 01484 537 411

## Leeds

No. 1 Aire Street  
Leeds LS1 4PR  
T 0113 243 9794

## London

24 Greville Street  
London EC1N 8SS  
T 020 7837 9789

## Manchester

5th Floor  
55 Princess Street  
Manchester M2 4EW  
T 0161 828 7900

## Shrewsbury

First Floor  
Victoria House  
Victoria Quay  
Shrewsbury SY1 1HH  
T 01743 283 000







We approach every project with the same commitment to quality, excellence and integrity in all we do.